

For Lease

Uptown Professional Office Space

LOUISIANA PLACE NEAR I-40 & LOUISIANA BLVD.



1700 Louisiana Blvd. NE | Albuquerque, NM 87110

SEQ I-40 & Louisiana Blvd. NE



LEASE RATE
\$17.95/SF
Full Service



AVAILABLE
±973 –
±9,841 RSF

- Spectacular views of the Sandia mountains
- Ample windows
- Parking: 4.3:1,000
- Building and monument signage available for large tenant

NAISunVista

got space™

Dave Hill, CCIM, SIOR
dave@sunvista.com
505 238 6413

DJ Brigman, CCIM
DJ@sunvista.com
505 998 1562

Danaë Fernández
danae@sunvista.com
505 604 8766

For Lease

UPTOWN PROFESSIONAL OFFICE SPACE

1700 Louisiana Blvd. NE | Albuquerque, NM 87110



HIGHLIGHTS

AVAILABLE

1ST FLOOR

- Suite 110: ±3,933 RSF \$17.95/SF
- Suite 120: ±5,275 RSF \$17.95/SF
(Available 12/1/2024)

2ND FLOOR

- Suite 210: ±973 RSF \$17.95/SF
- Suite 240: ±9,841 RSF \$17.95/SF

3RD FLOOR

- Suite 310: ±1,449 RSF \$17.95/SF

All Rates are Full Service

PROPERTY FEATURES

- Spectacular views of the Sandias
- Parking ratio: 4.3:1,000
- Ample windows
- Recently remodeled lobby and all common areas
- New exterior renovation
- Building and monument signage available for large tenant

IDO ZONING [MX-M](#) 

NAISunVista

505 878 0001 | sunvista.com    
2424 Louisiana Blvd. NE | Suite 100 | Albuquerque, NM 87110

Dave Hill, CCIM, SIOR
dave@sunvista.com
505 238 6413

DJ Brigman, CCIM
DJ@sunvista.com
505 998 1562

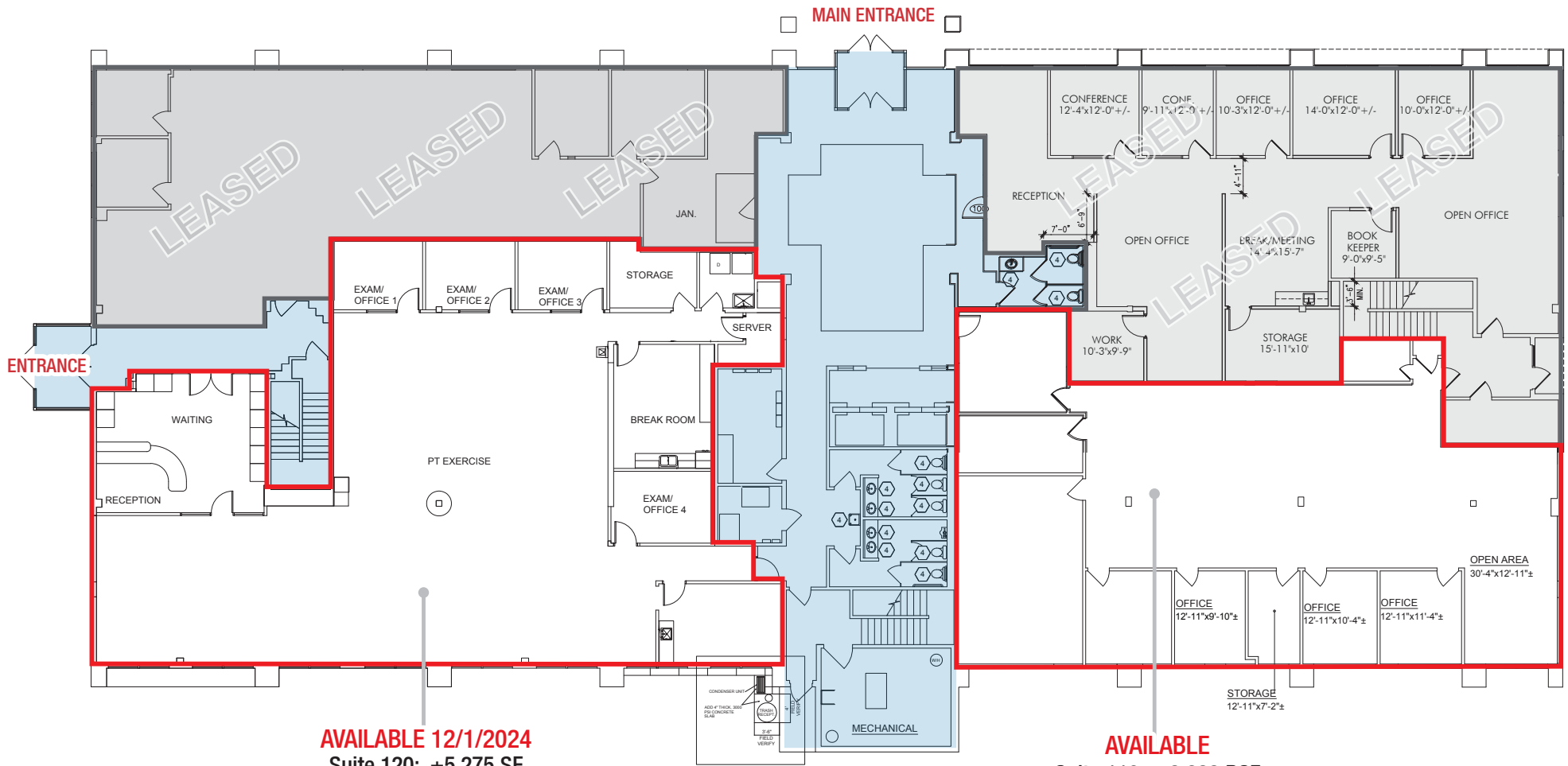
Danaë Fernández
danae@sunvista.com
505 604 8766

For Lease

UPTOWN PROFESSIONAL OFFICE SPACE

1700 Louisiana Blvd. NE | Albuquerque, NM 87110

1ST FLOOR



AVAILABLE 12/1/2024
Suite 120: ±5,275 SF
\$17.95/SF Full Service

AVAILABLE
Suite 110: ±3,933 RSF
\$17.95/SF Full Service

- Available
- Leased
- Common Area

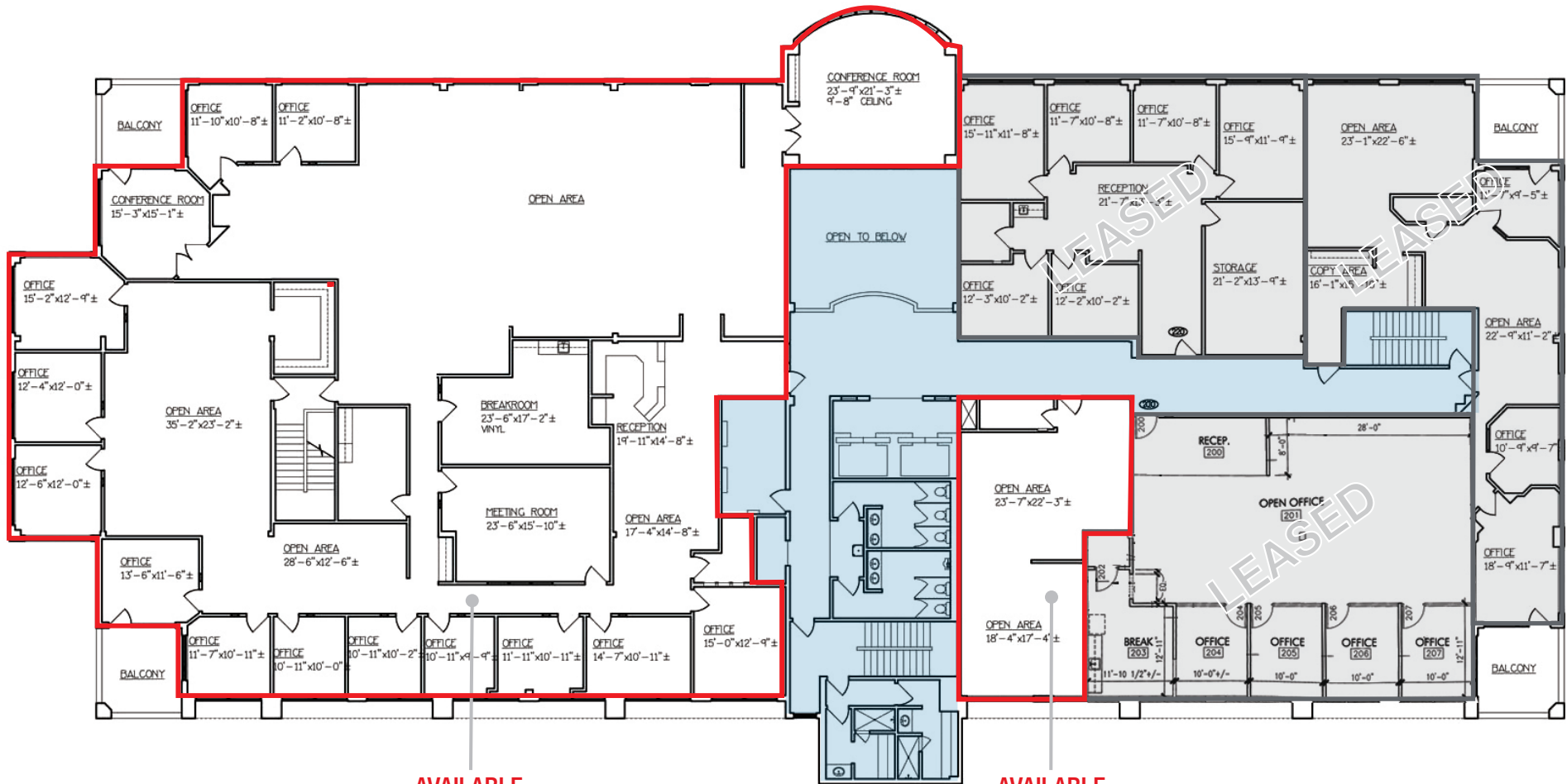


For Lease

UPTOWN PROFESSIONAL OFFICE SPACE

1700 Louisiana Blvd. NE | Albuquerque, NM 87110

2ND FLOOR



- Available
- Leased
- Common Area

AVAILABLE
Suite 240: ±9,841 RSF
\$17.95/SF Full Service

AVAILABLE
Suite 210: ±973 RSF
\$17.95/SF Full Service

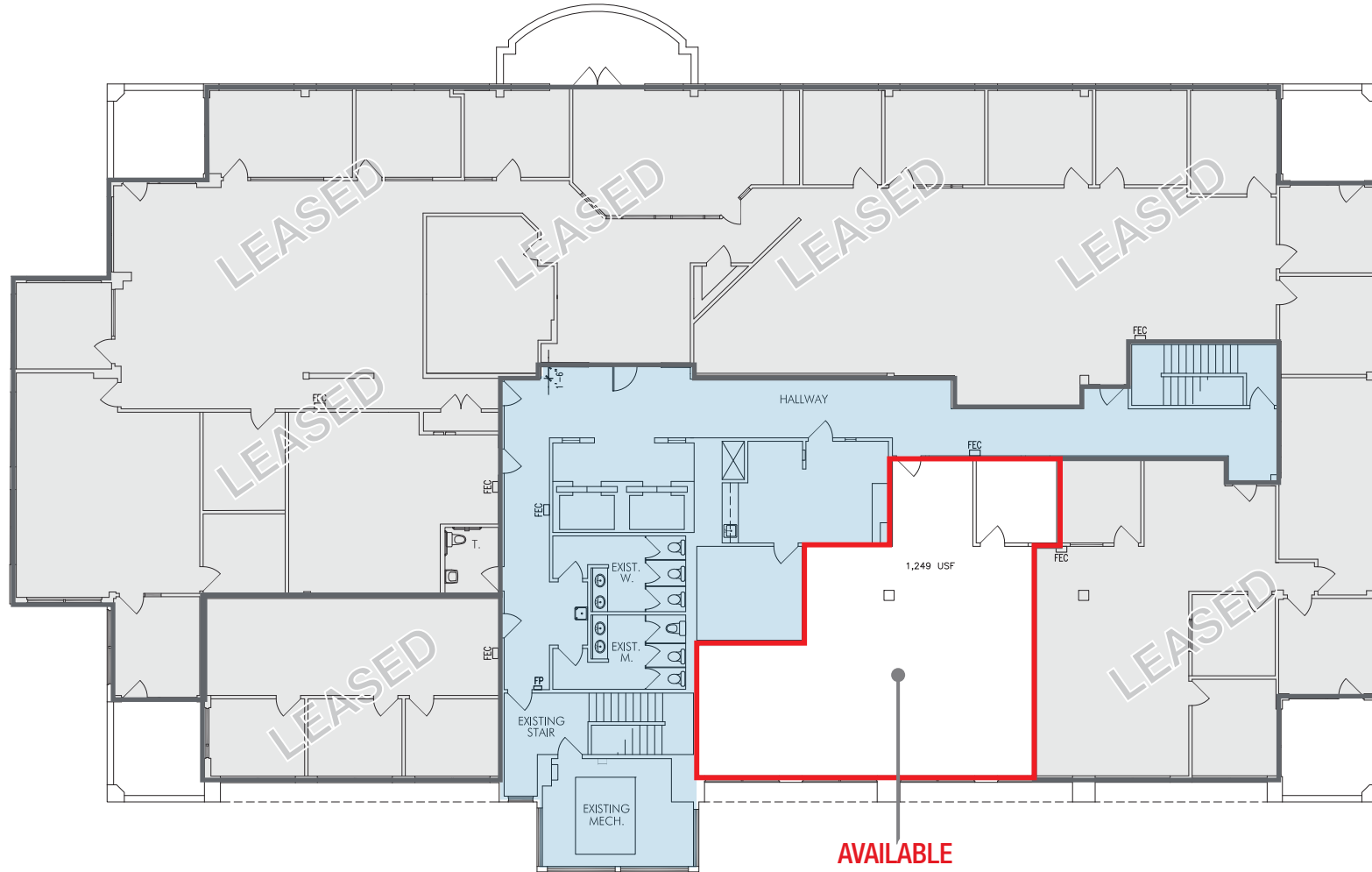


For Lease

UPTOWN PROFESSIONAL OFFICE SPACE

1700 Louisiana Blvd. NE | Albuquerque, NM 87110

3RD FLOOR



- Available
- Leased
- Common Area

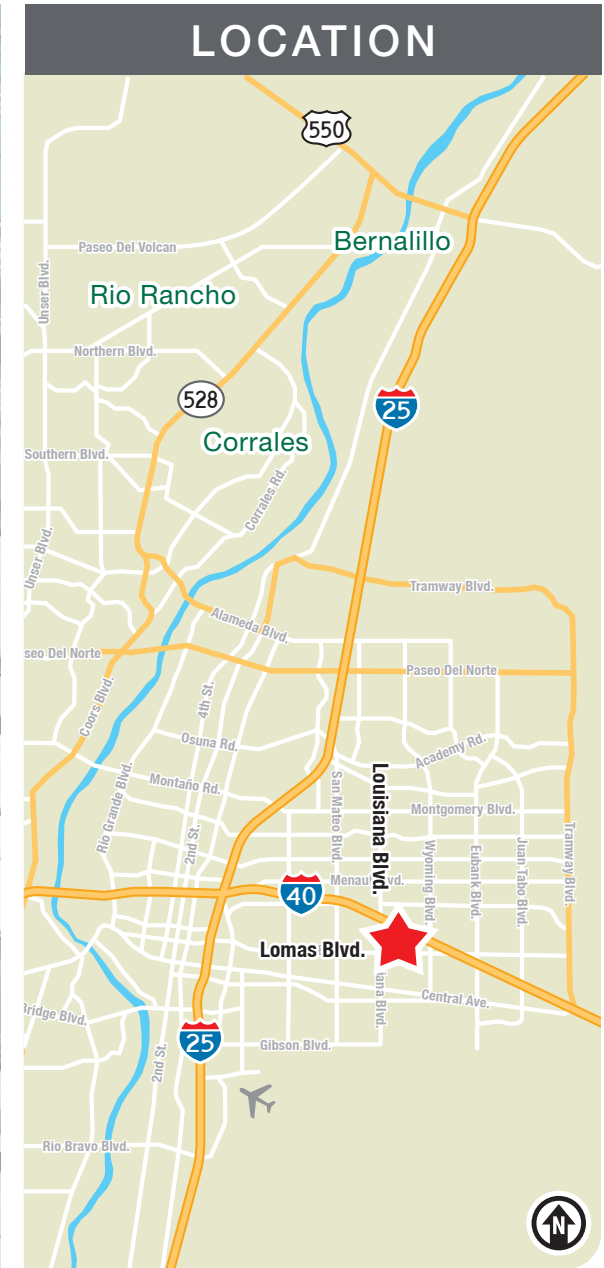
AVAILABLE
Suite 310: ±1,449 RSF
\$17.95/SF Full Service



For Lease

UPTOWN PROFESSIONAL OFFICE SPACE

1700 Louisiana Blvd. NE | Albuquerque, NM 87110



NAISunVista

505 878 0001 | sunvista.com | [f](https://www.facebook.com/sunvista) [t](https://www.twitter.com/sunvista) [in](https://www.linkedin.com/company/sunvista) [y](https://www.youtube.com/sunvista)
2424 Louisiana Blvd. NE | Suite 100 | Albuquerque, NM 87110

Dave Hill, CCIM, SIOR
dave@sunvista.com
505 238 6413

DJ Brigman, CCIM
DJ@sunvista.com
505 998 1562

Danaë Fernández
danae@sunvista.com
505 604 8766

For Lease

UPTOWN PROFESSIONAL OFFICE SPACE

1700 Louisiana Blvd. NE | Albuquerque, NM 87110



NAISunVista

The information contained is believed reliable. While we do not doubt the accuracy, we have not verified it and make no guarantee, warranty or representation about it. It is your responsibility to independently confirm its accuracy and completeness. Any projection, opinion, assumption or estimated uses are for example only and do not represent the current or future performance of the property. The value of this transaction to you depends on many factors which should be evaluated by your tax, financial, and legal counsel. You and your counsel should conduct a careful independent investigation of the property to determine that it is suitable to your needs.

Dave Hill, CCIM, SIOR
dave@sunvista.com
505 238 6413

DJ Brigman, CCIM
DJ@sunvista.com
505 998 1562

Danaë Fernández
danae@sunvista.com
505 604 8766