

For Lease

Industrial & Office Space Available

CONVENIENTLY LOCATED NEAR I-25 NORTH



3600-3700 Osuna Rd. NE | Albuquerque, NM 87109

SWC Osuna Rd. & Academy Parkway NE



AVAILABLE

±1,500 - 5,950 SF



LEASE RATE

\$14.00/SF Modified Gross
with 3-Year Lease Term

- Less than a mile west of I-25
- Flexible floor plans
- On-site property management/maintenance
- Dusk-to-dawn security patrol
- Very close to restaurants & amenities
- IDO Zoning: [NR-BP](#)

NA SunVista

got space™

Todd Strickland
todd@sunvista.com
505 450 1121

Rob Bridges, CCIM
rob@sunvista.com
505 977 5094

Dave Hill, CCIM, SIOR
dave@sunvista.com
505 238 6413

For Lease

NORTH I-25 INDUSTRIAL AND OFFICE SPACE

3600-3700 Osuna Rd. NE | Albuquerque, NM 87109



SITE PLAN

AVAILABLE

All lease rates are modified gross and reflect a 3-year lease term.

Building 3

- Suite 318 & 319: ±3,000 SF
- Office/Warehouse
 - \$14.00/SF (\$3,500/Month)

Building 5

- Suite 500: ±1,675 SF
- Retail/Office
 - \$14.00/SF (\$1,954/Month)

- Suite 508: ±1,500 SF
- Office
 - \$14.00/SF (\$1,750/Month)

Building 6

- Suite 607: ±5,950 SF
- Warehouse
 - \$14.00/SF (\$6,942/Month)

- Suite 630: ±1,500 SF
- Warehouse
 - \$14.00/SF (\$1,750/Month)

Building 7

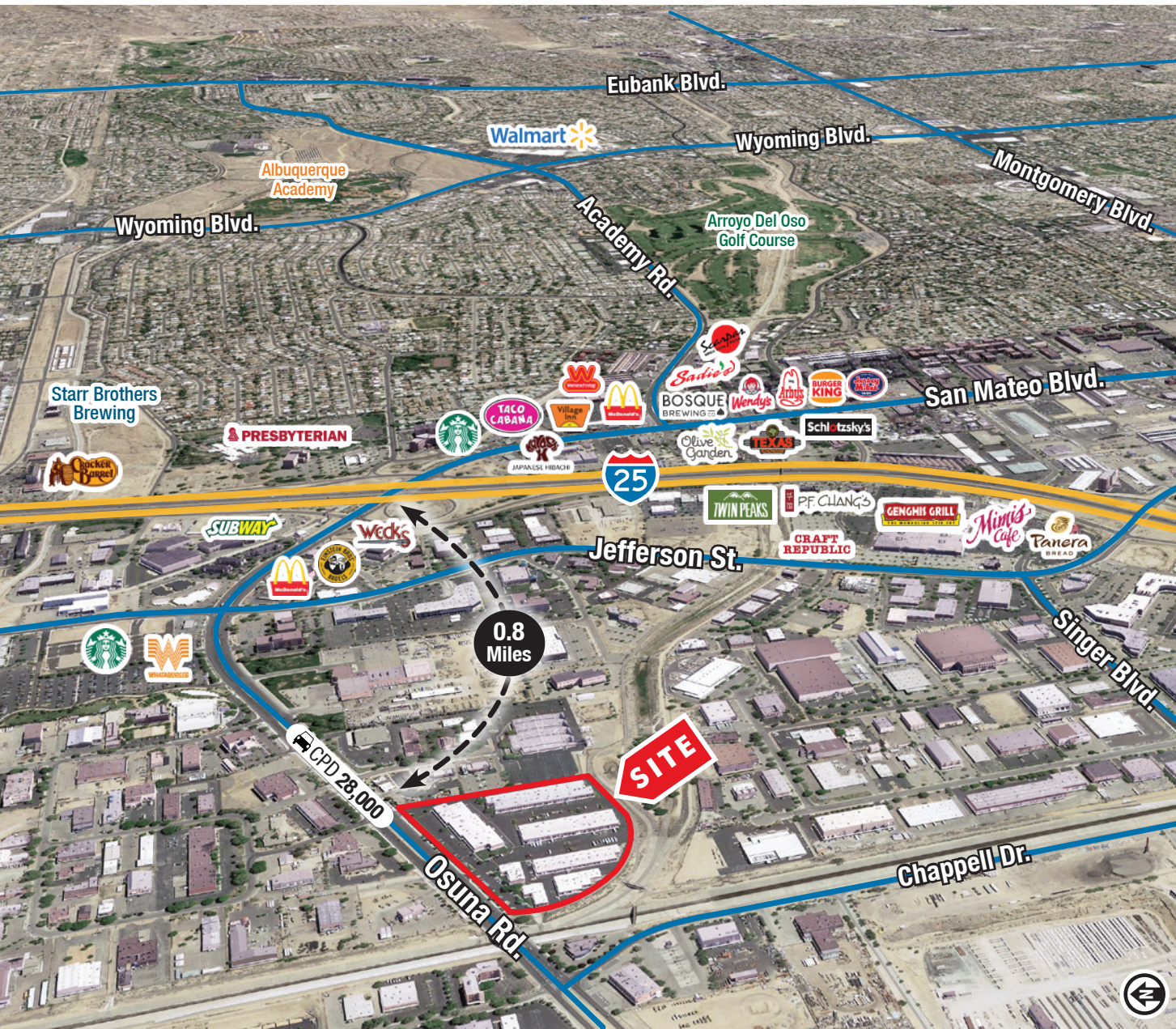
- Suites 708 & 709: ±4,500 SF
- Office/Warehouse
 - \$14.00/SF (\$5,250/Month)



For Lease

NORTH I-25 INDUSTRIAL AND OFFICE SPACE

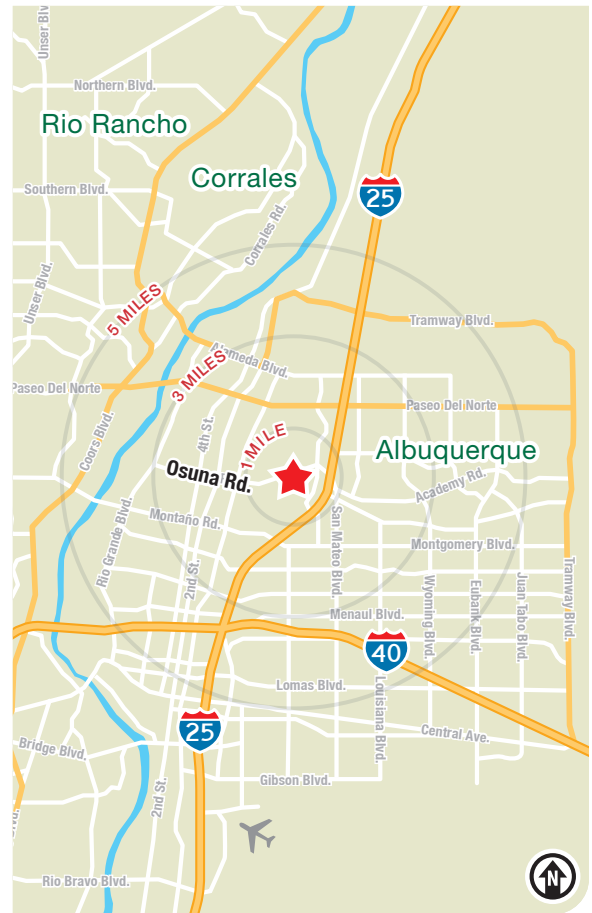
3600-3700 Osuna Rd. NE | Albuquerque, NM 87109



LOCATION

Demographics	1 mile	3 mile	5 mile
Total Population	3,552	79,894	225,270
Average HH Income	\$108,275	\$86,987	\$100,483
Daytime Employment	19,337	95,533	190,329

2024 Forecasted by Esri



NAI SunVista

505 878 0001 | suvista.com |
2424 Louisiana Blvd. NE | Suite 100 | Albuquerque, NM 87110

Todd Strickland
todd@suvista.com
505 450 1121

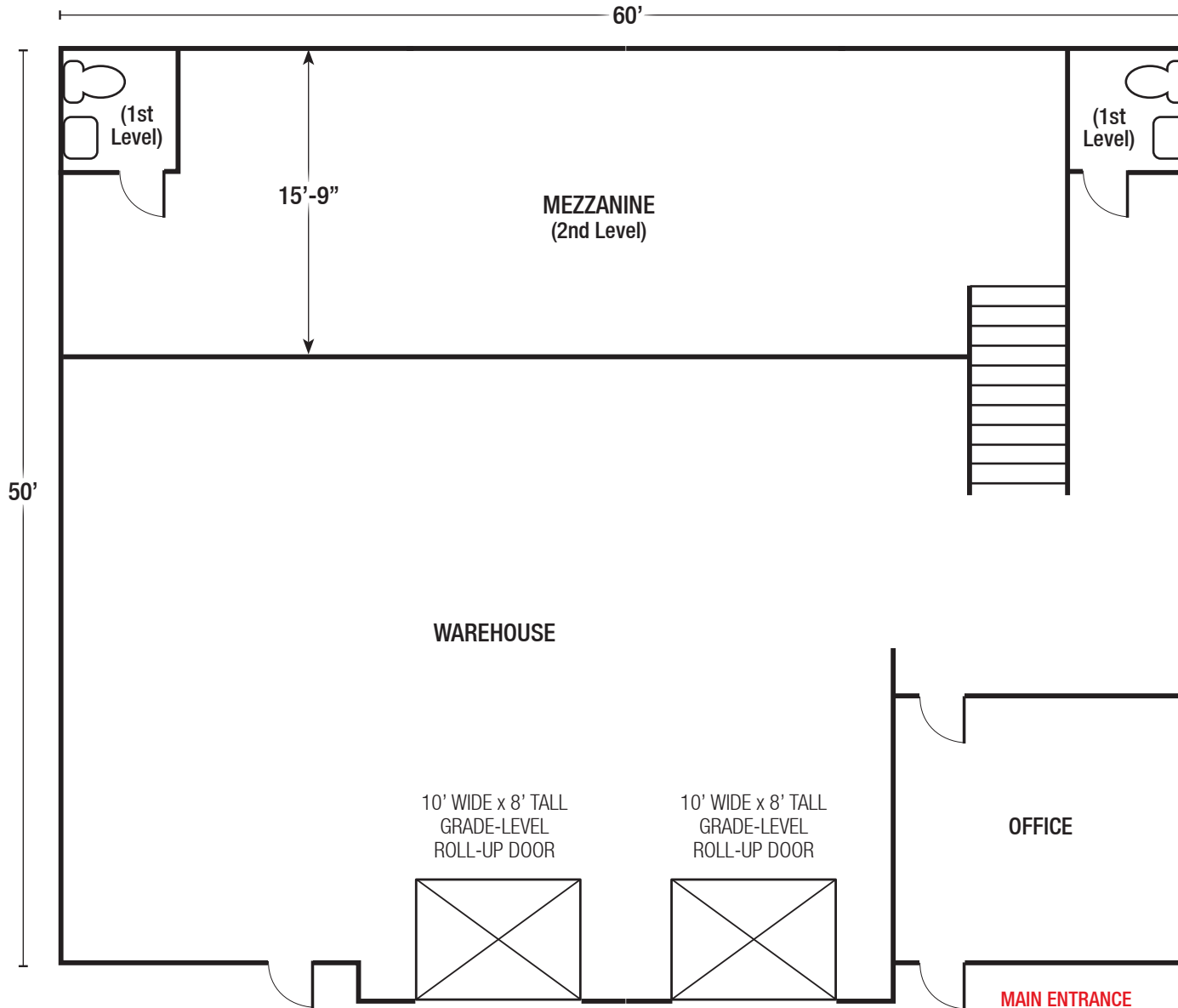
Rob Bridges, CCIM
rob@suvista.com
505 977 5094

Dave Hill, CCIM, SIOR
dave@suvista.com
505 238 6413

For Lease

NORTH I-25 INDUSTRIAL AND OFFICE SPACE

3600-3700 Osuna Rd. NE | Albuquerque, NM 87109



OFFICE/ WAREHOUSE

Suites 318 & 319:
±3,000 SF

\$14.00/SF Modified Gross
(\$3,500/Month)
3-Year Lease

Floor plan not to scale.



505 878 0001 | sunvista.com    
2424 Louisiana Blvd. NE | Suite 100 | Albuquerque, NM 87110

Todd Strickland
todd@sunvista.com
505 450 1121

Rob Bridges, CCIM
rob@sunvista.com
505 977 5094

Dave Hill, CCIM, SIOR
dave@sunvista.com
505 238 6413

For Lease

NORTH I-25 INDUSTRIAL AND OFFICE SPACE

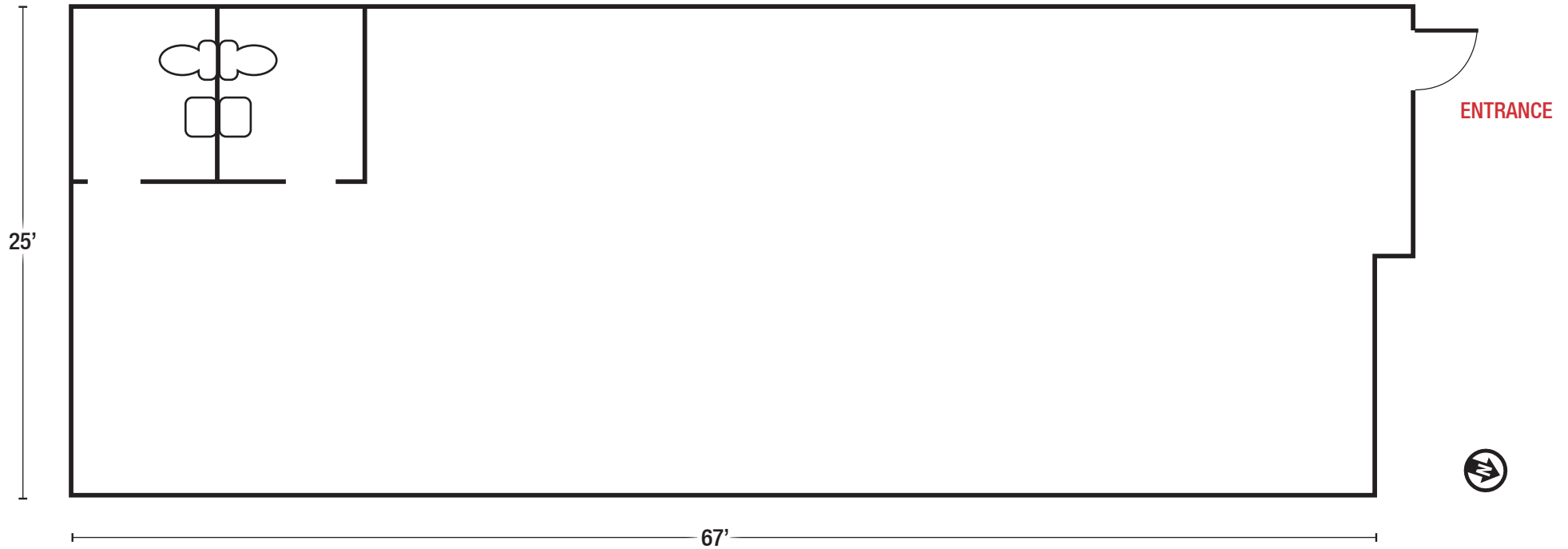
3600-3700 Osuna Rd. NE | Albuquerque, NM 87109

Suite 500: ±1,675 SF

\$14.00/SF Modified Gross (\$1,955/Month)
3-Year Lease

Floor plan not to scale.

RETAIL/OFFICE



For Lease

NORTH I-25 INDUSTRIAL AND OFFICE SPACE

3600-3700 Osuna Rd. NE | Albuquerque, NM 87109

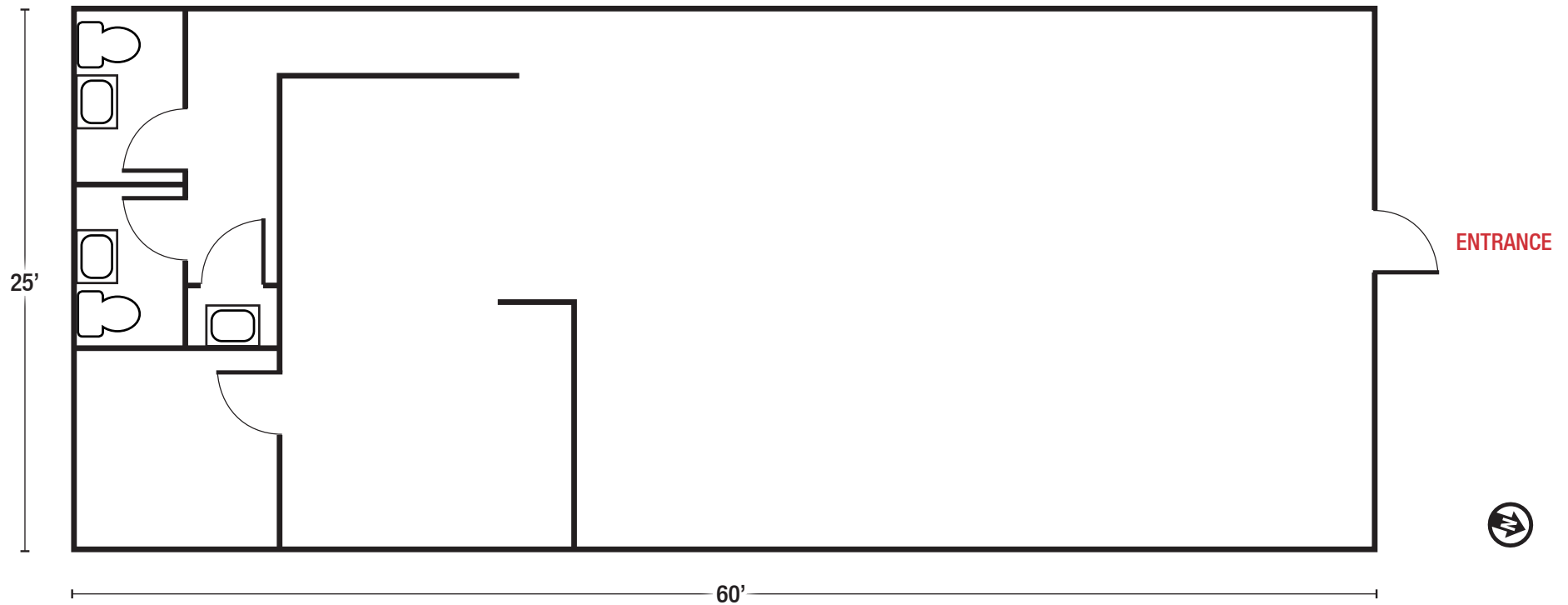
Suite 508: ±1,500 SF

\$14.00/SF Modified Gross (\$1,750/Month)

3-Year Lease

Floor plan not to scale.

OFFICE



For Lease

NORTH I-25 INDUSTRIAL AND OFFICE SPACE

3600-3700 Osuna Rd. NE | Albuquerque, NM 87109

Suite 607: ±5,950 SF

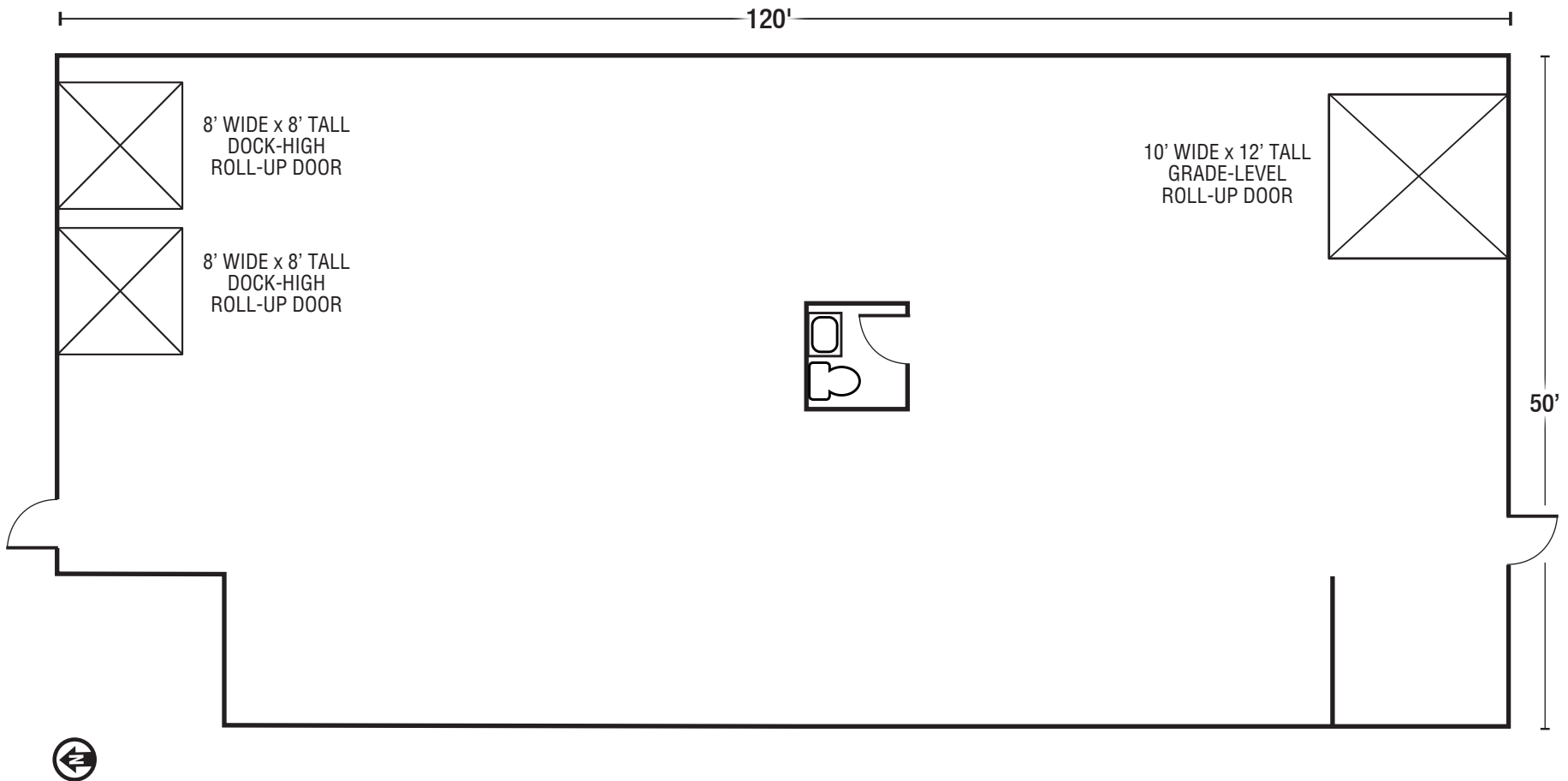
\$14.00/SF Modified Gross (\$6,942/Month)

3-Year Lease

Floor plan not to scale.

WAREHOUSE

Can be demised into two ±3,000 SF spaces.



For Lease

NORTH I-25 INDUSTRIAL AND OFFICE SPACE

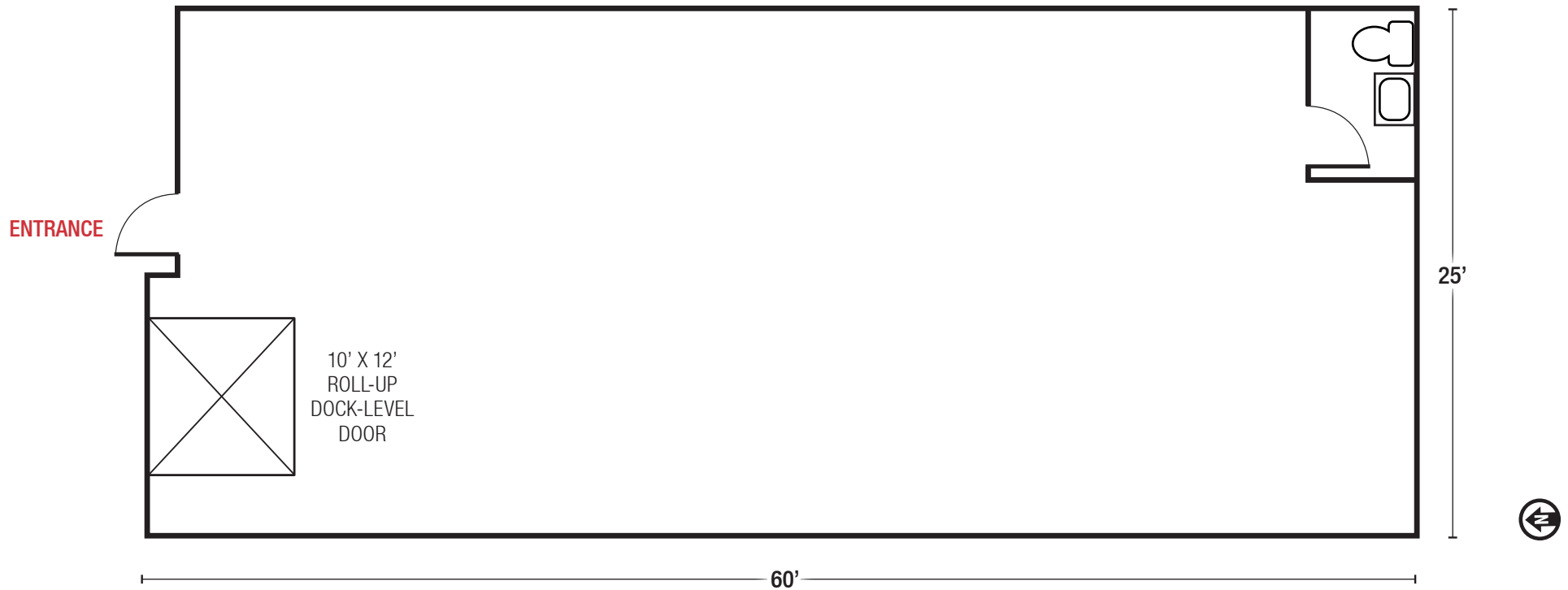
3600-3700 Osuna Rd. NE | Albuquerque, NM 87109

Suite 630: ±1,500 SF

\$14.00/SF Modified Gross (\$1,750/Month)
3-Year Lease

Floor plan not to scale.

WAREHOUSE



For Lease

NORTH I-25 INDUSTRIAL AND OFFICE SPACE

3600-3700 Osuna Rd. NE | Albuquerque, NM 87109

OFFICE/WAREHOUSE

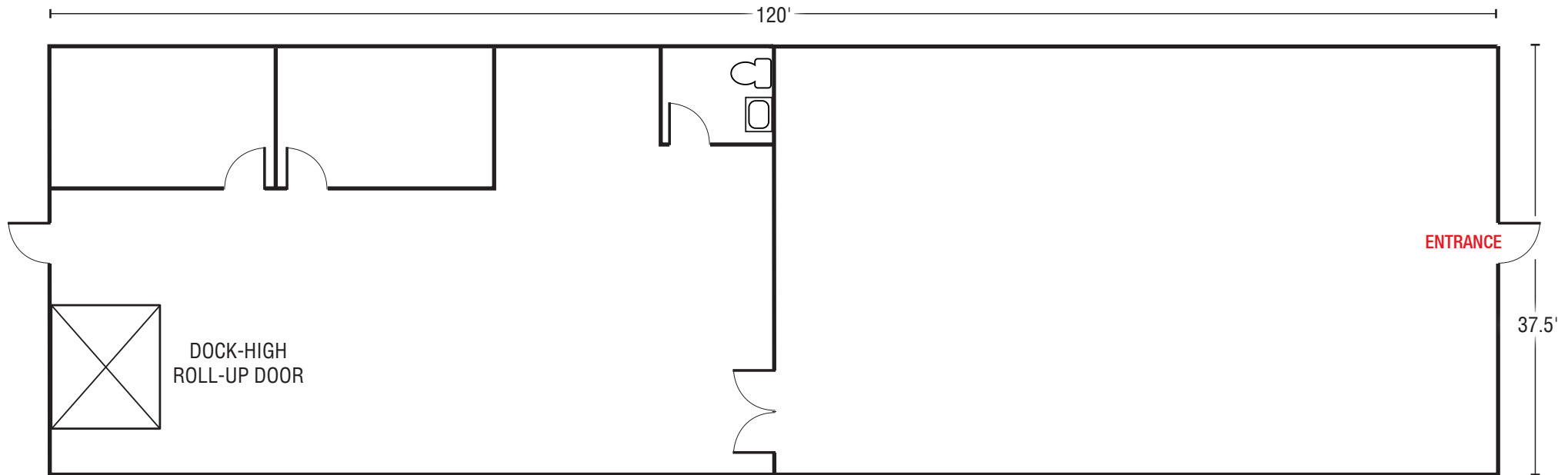
Suites 708 & 709: ±4,500 SF

\$14.00/SF Modified Gross

(\$5,250/Month)

3-Year Lease

Floor plan not to scale.



For Lease

NORTH I-25 INDUSTRIAL AND OFFICE SPACE

3600-3700 Osuna Rd. NE | Albuquerque, NM 87109



The information contained is believed reliable. While we do not doubt the accuracy, we have not verified it and make no guarantee, warranty or representation about it. It is your responsibility to independently confirm its accuracy and completeness. Any projection, opinion, assumption or estimated uses are for example only and do not represent the current or future performance of the property. The value of this transaction to you depends on many factors which should be evaluated by your tax, financial, and legal counsel. You and your counsel should conduct a careful independent investigation of the property to determine that it is suitable to your needs.

Todd Strickland
todd@sunvista.com
505 450 1121

Rob Bridges, CCIM
rob@sunvista.com
505 977 5094

Dave Hill, CCIM, SIOR
dave@sunvista.com
505 238 6413