

For Lease

San Pedro Office Park

UPTOWN'S BEST LEASE RATE FOR OFFICE SPACE



2201 & 2207 San Pedro Dr. NE | Albuquerque, NM 87110

NWQ I-40 & San Pedro Dr. NE



AVAILABLE

±682 -
±3,142 RSF



LEASE RATE

\$17.00/SF
Full Service

- Near Coronado Center, Winrock Town Center and ABQ Uptown
- Walking distance to restaurants, banking, hotels and professional services
- Overnight security for your safety
- Reserved covered parking available

NASunVista

got space™

Martha Carpenter
martha@sunvista.com
505 228 0154

Lisa Mercer
lisa@sunvista.com
505 235 8503

For Lease

SAN PEDRO OFFICE PARK IN UPTOWN

2201 & 2207 San Pedro Dr. NE | Albuquerque, NM 87110



Buildings 2 & 3



Buildings 1 & 3

For Lease

SAN PEDRO OFFICE PARK IN UPTOWN

2201 & 2207 San Pedro Dr. NE | Albuquerque, NM 87110



LOCATION

Demographics	1 mile	3 mile	5 mile
Total Population	11,915	135,989	310,135
Average HH Income	\$79,927	\$75,572	\$81,687
Daytime Employment	17,157	87,301	249,030

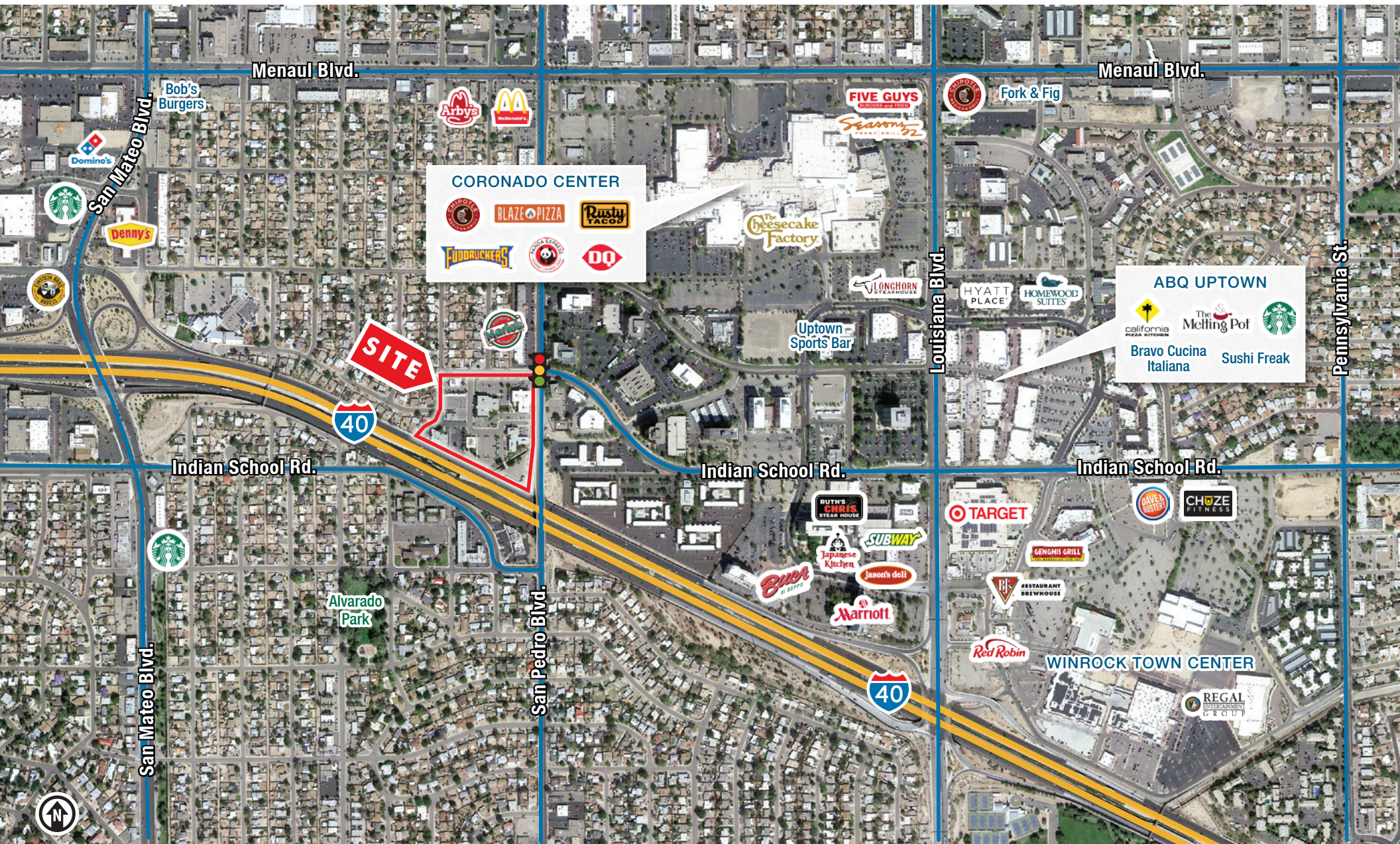
2023 Forecasted by Esri



For Lease

SAN PEDRO OFFICE PARK IN UPTOWN

2201 & 2207 San Pedro Dr. NE | Albuquerque, NM 87110



For Lease

SAN PEDRO OFFICE PARK IN UPTOWN

2201 & 2207 San Pedro Dr. NE | Albuquerque, NM 87110



AVAILABLE

BUILDING 2

Suite 207: ±3,142 RSF \$4,451/Mo.

BUILDING 3

Suite 107: ±2,984 RSF \$4,227/Mo.

Suite 108: ±682 RSF \$966/Mo.

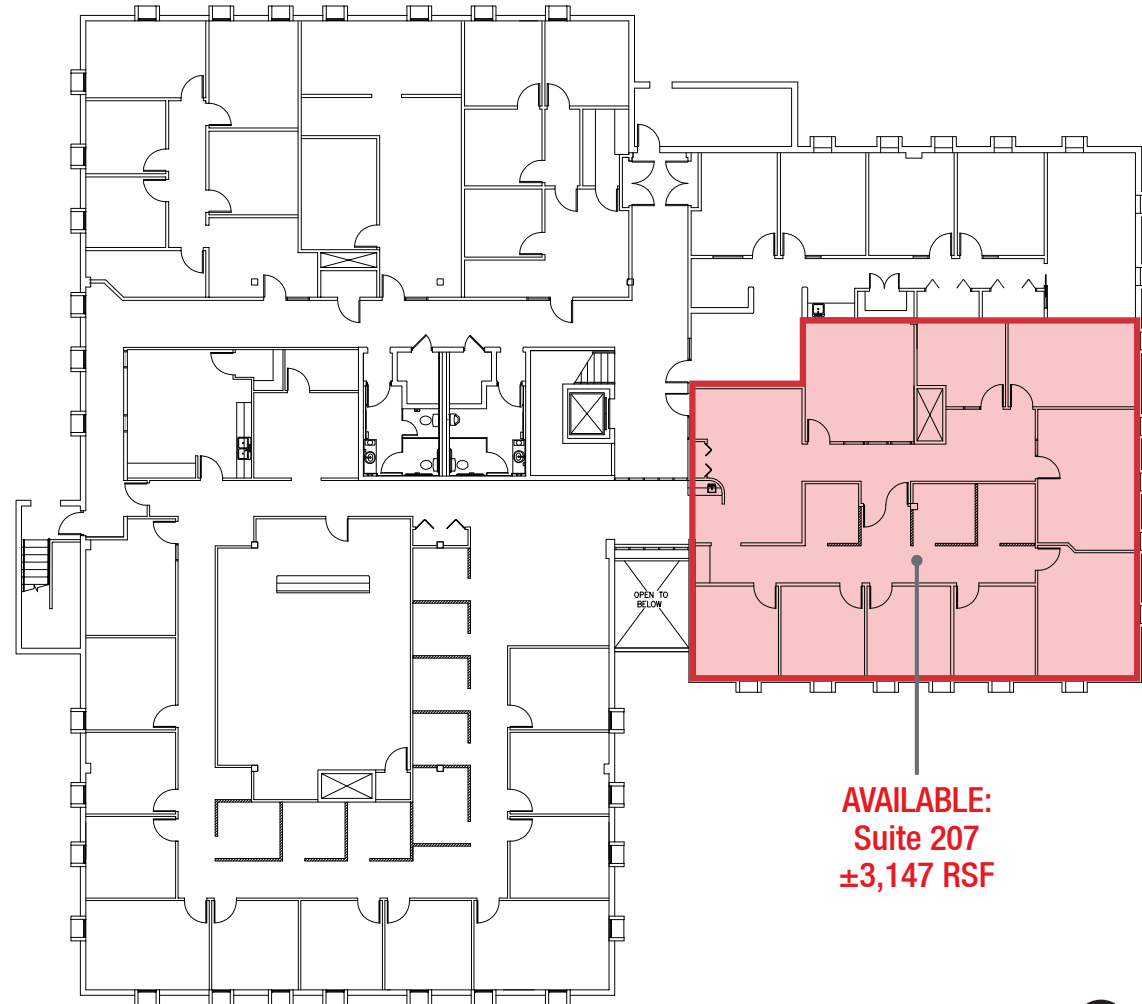
All Rates Above are Full Service

For Lease

SAN PEDRO OFFICE PARK IN UPTOWN

2201 & 2207 San Pedro Dr. NE | Albuquerque, NM 87110

BUILDING 2 | Second Floor



AVAILABLE:
Suite 207
±3,147 RSF

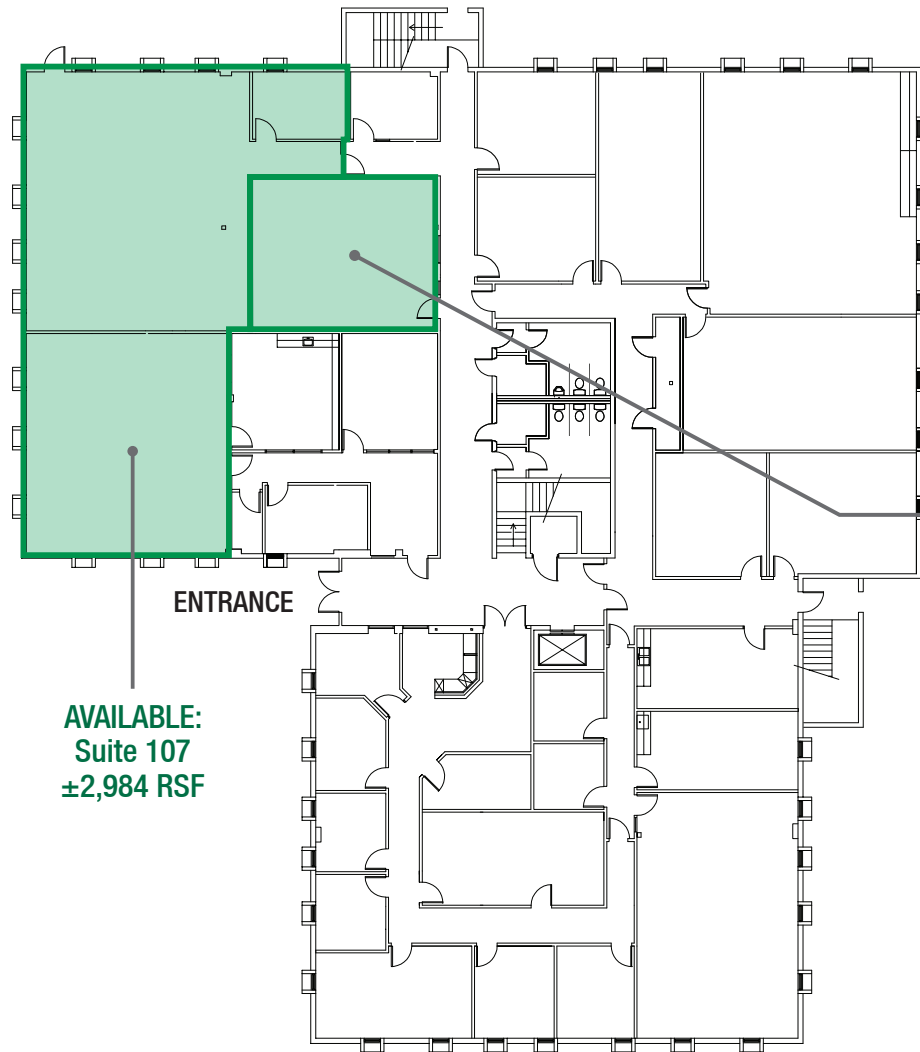


For Lease

SAN PEDRO OFFICE PARK IN UPTOWN

2201 & 2207 San Pedro Dr. NE | Albuquerque, NM 87110

BUILDING 3 | First Floor



AVAILABLE:
Suite 107
±2,984 RSF

