

For Sale

Development Ready Subdivision

14 SINGLE-FAMILY LOTS IN PROSPECTORS RIDGE

Sandstone, Flagstone & Mineral Way Lots | Socorro, NM 87801

NWQ El Camino Real & Bullock Blvd.



AVAILABLE
±2.818 Ac. Subdivision



SALE PRICE
\$515,000

ZONING

- R-1

HIGHLIGHTS

- Full underground utilities available to each lot
- Newly-added fiber optic
- Compacted & graded lots primed for development
- 1.5 miles to New Mexico Institute of Mining & Technology (New Mexico Tech)
- Adjacent to an established neighborhood



This property is in a
HUB Zone

For Small Companies in
Historically Underutilized
Business Zones



NASunVista

got space™

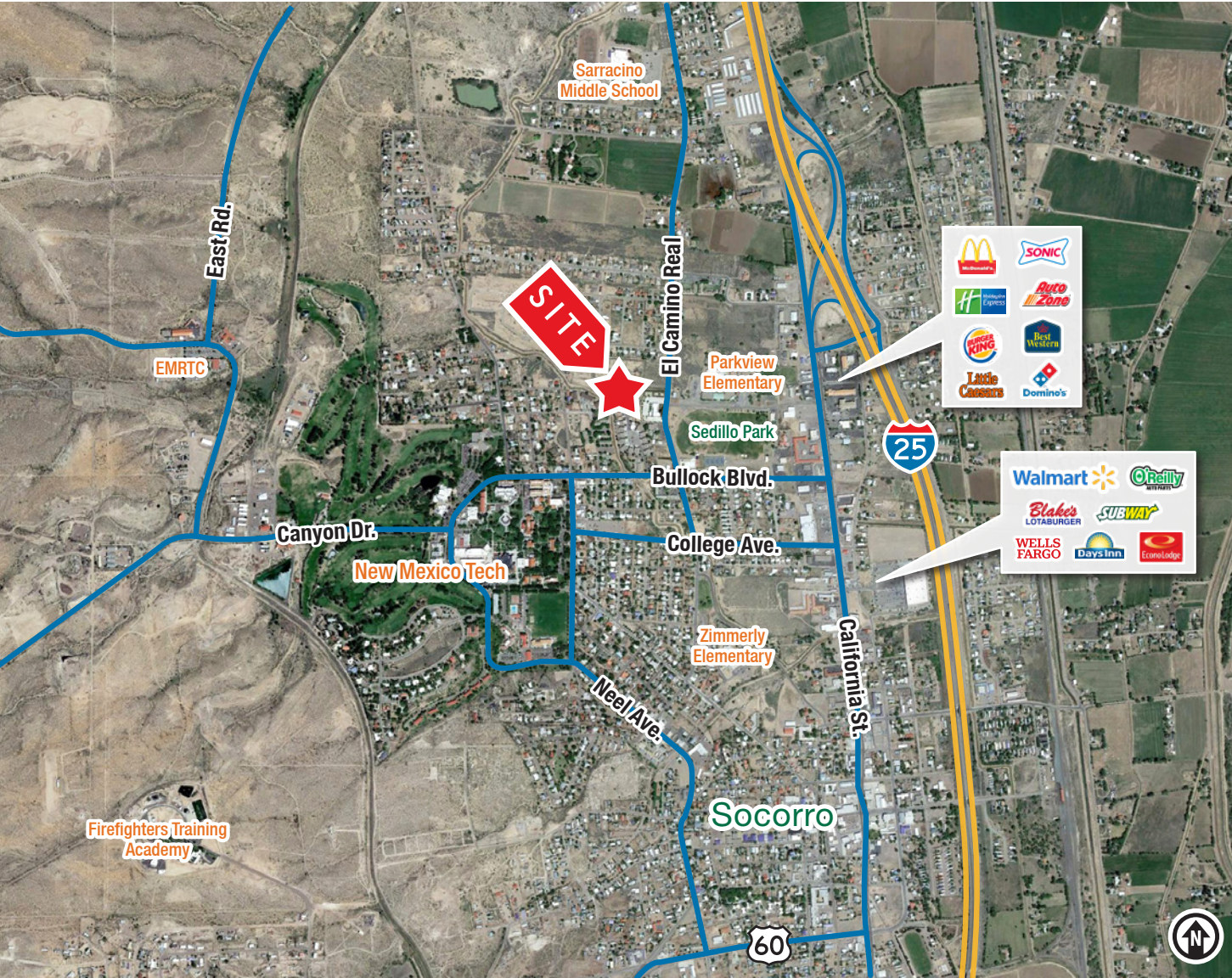
Alex Pulliam
alex@sunvista.com
505 350 5729

For Sale

Development Ready Subdivision

14 SINGLE-FAMILY LOTS IN PROSPECTORS RIDGE

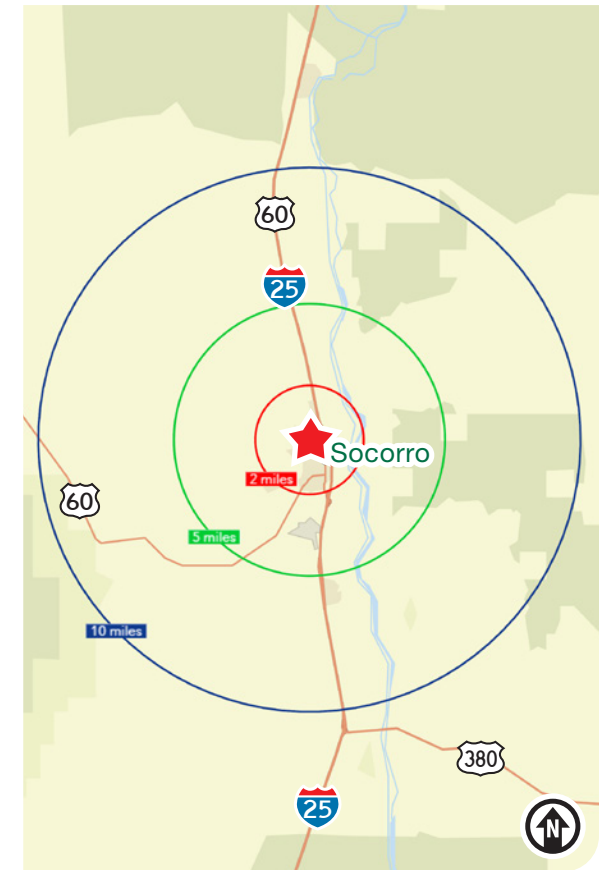
Sandstone, Flagstone & Mineral Way Lots | Socorro, NM 87801



LOCATION

| Demographics | 1 mile | 3 mile | 5 mile |
|--------------------|----------|----------|----------|
| Total Population | 8,375 | 9,241 | 10,636 |
| Average HH Income | \$64,124 | \$64,764 | \$65,501 |
| Daytime Employment | 3,990 | 4,626 | 4,735 |

2022 Forecasted by Esri



Socorro

TRADE AREA ANALYSIS

SOCORRO | NEW MEXICO

Socorro has it all... small-town charm that's rich in history & culture with an economy based upon cutting-edge technology. Located in the center of New Mexico on I-25 and just 75 miles south of Albuquerque, it is blessed with many restaurants, hotels and things to do and see. Socorro's economy is fueled by technology-based enterprises. The National Radio Astronomy Observatory (VLA) radio telescopes, New Mexico Institute of Mining and Technology and White Sands Missile Range attract scientists and engineers from across the globe. Agriculture and commercial businesses bolster growth, and artists and musicians are attracted to Socorro's southwestern charms.



2nd Largest
County by Area
in New Mexico



SOCORRO BY THE NUMBERS *(ESRI 2022 Demographics)*



8,531
City Population



3,437
Households



\$65,239
Avg. Household Income



\$40,021
Md. Disposable Income



362
Total Businesses



4,585
Total Employees

Socorro's economy is fueled by **technology-based** enterprises.



Key Employers

- Aerojet Rocketdyne
- Dicaperl Minerals
- National Radio Astronomy Observatory (VLA)
- NM Bureau of Geology and Mineral Resources
- New Mexico Tech

NEW MEXICO TECH

- NM Tech has over a dozen research divisions that work with private industry, government agencies and other universities.
- Nearly all professors in every academic department maintain active research projects that involve undergraduate students.
- Research partners include GE, Yates Petroleum, NASA, the national laboratories and numerous other high-tech companies worldwide.
- The NM Tech Energetic Materials Research Testing Center (EMRTC) hosts terrorism-response training classes for first responders from around the nation and the world.



Things to See

The Bosque del Apache's Festival of the Cranes attracts many visitors, and both the Bosque and Sevilleta National Wildlife Refuge contribute funds to the economy. Other attractions include Box Canyon, El Camino Real Historic Trail Site, Fort Craig, San Lorenzo Canyon, and the San Miguel Mission.

