

For Sale

# Warehouse Facility on 83 Acres

LOCATED IN CENTRAL NEW MEXICO NEAR I-40



1391 State Route 91 | Santa Rosa, NM 88435

*SWQ Interstate 40 & US Highway 84*



## AVAILABLE

Buildings: ±58,500 SF  
Land: ±83.36 Ac.



## SALE PRICE

\$1,000,000

- Facility located just 8 minutes from I-40
- Sits on ±83.36 acres of which ±22.00 acres are irrigated farm land
- Includes water rights
- 6 grade-level roll-up doors

**NA** SunVista

got space™

**Randall Parish**  
randall@sunvista.com  
505 314 4316

# For Sale

## WAREHOUSE FACILITY ON 83 ACRES

1391 State Route 91 | Santa Rosa, NM 88435

### SITE

#### AVAILABLE

Main Warehouse: ±54,000 SF

Small Warehouse: ±4,500 SF

Total: ±58,500 SF

Land: ±83.36 Ac.

#### HIGHLIGHTS

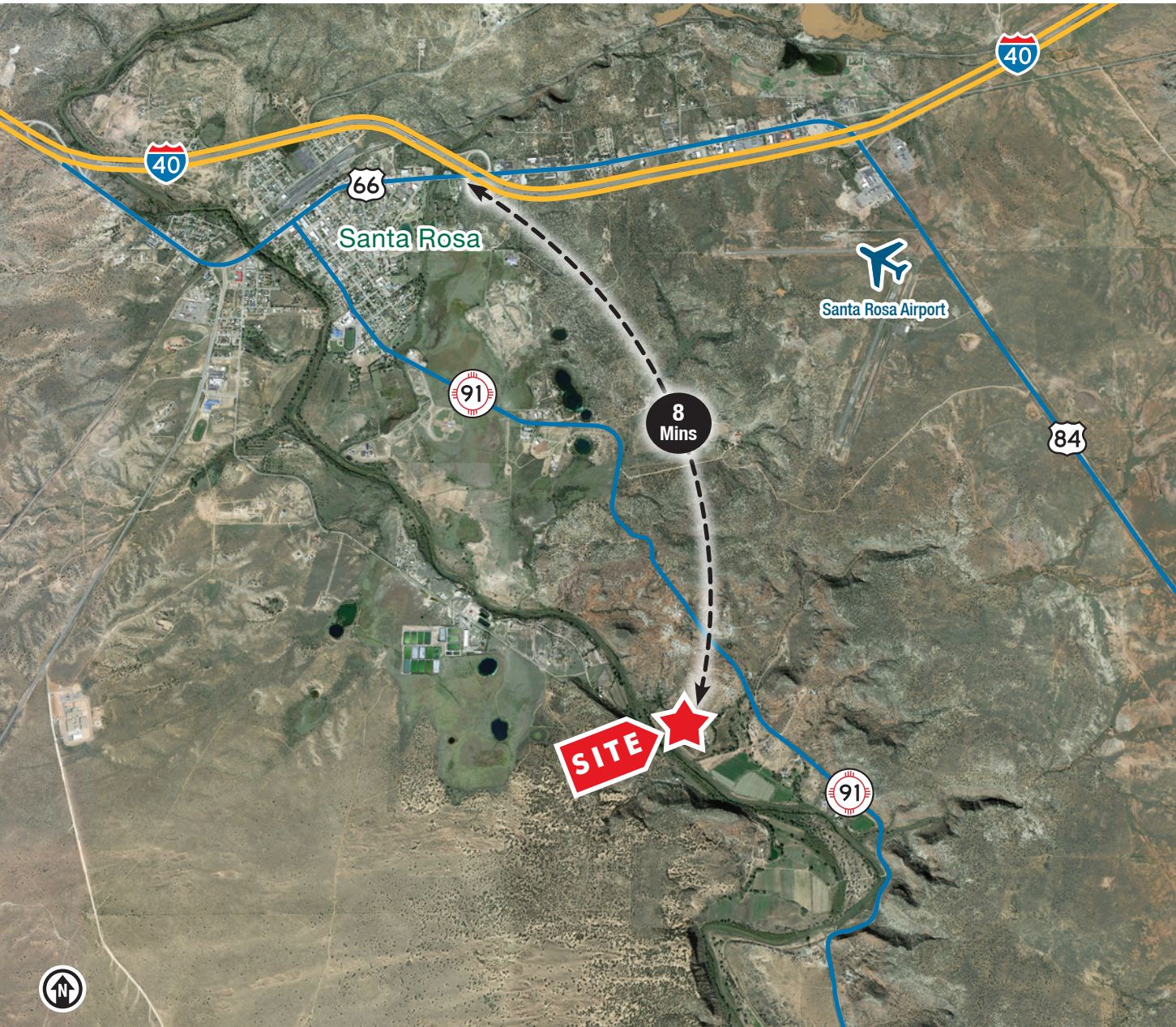
- Facility located just 8 minutes from I-40
- Built in 2019
- Main warehouse has 4 grade-level roll-up doors
- Small warehouse has 2 grade-level roll-up doors
- 3-phase 480V power supply
- Sits on ±83.36 acres of which ±22.00 acres are irrigated farm land
- Includes water rights



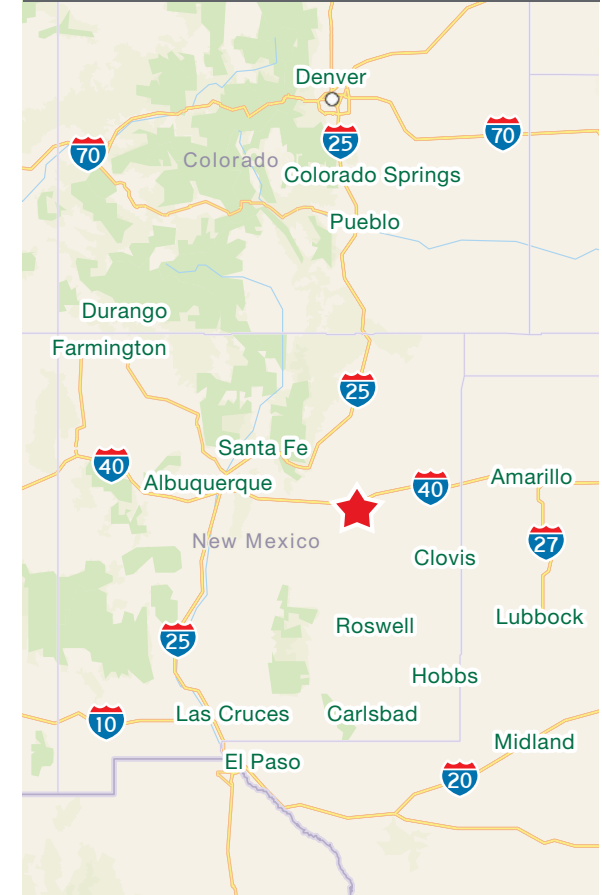
# For Sale

## WAREHOUSE FACILITY ON 83 ACRES

1391 State Route 91 | Santa Rosa, NM 88435



### LOCATION



### DESTINATION TIMES

Albuquerque, NM	117 mi	1 hrs 45 min
Amarillo, TX	172 mi	2 hrs 29 min
Lubbock, TX	205 mi	3 hrs 28 min
El Paso, TX	266 mi	4 hrs 15 min
Denver, CO	393 mi	5 hrs 45 min

For Sale

## WAREHOUSE FACILITY ON 83 ACRES

1391 State Route 91 | Santa Rosa, NM 88435

