

For Lease

# Retail Space On High-Traffic Corridor

SAN MATEO PLAZA RETAIL CENTER

5500 San Mateo Blvd. NE | Suite 104 | Albuquerque, NM 87109

SEQ San Mateo Blvd. & Osuna Rd. NE



**AVAILABLE**

Suite 104: ±1,257 SF



**LEASE RATE**

\$1,859.31/Month

- Located in a dense retail trade area
- Excellent visibility from San Mateo Blvd. with almost 40,000 cars per day
- Abundant 5:1,000 parking ratio
- Building and monument signage
- A+ Landlord
- IDO Zoning: MX-H

**NAI SunVista**

got space™

**Todd Strickland**  
todd@sunvista.com  
505 450 1121

**Rob Bridges**  
rob@sunvista.com  
505 977 5094

# For Lease

## RETAIL SPACE ON HIGH-TRAFFIC CORRIDOR

5500 San Mateo Blvd. NE | Suite 104 | Albuquerque, NM 87109



**NAI SunVista**

505 878 0001 | [sunvista.com](http://sunvista.com) | [f](#) [X](#) [in](#) [v](#)  
2424 Louisiana Blvd. NE | Suite 100 | Albuquerque, NM 87110

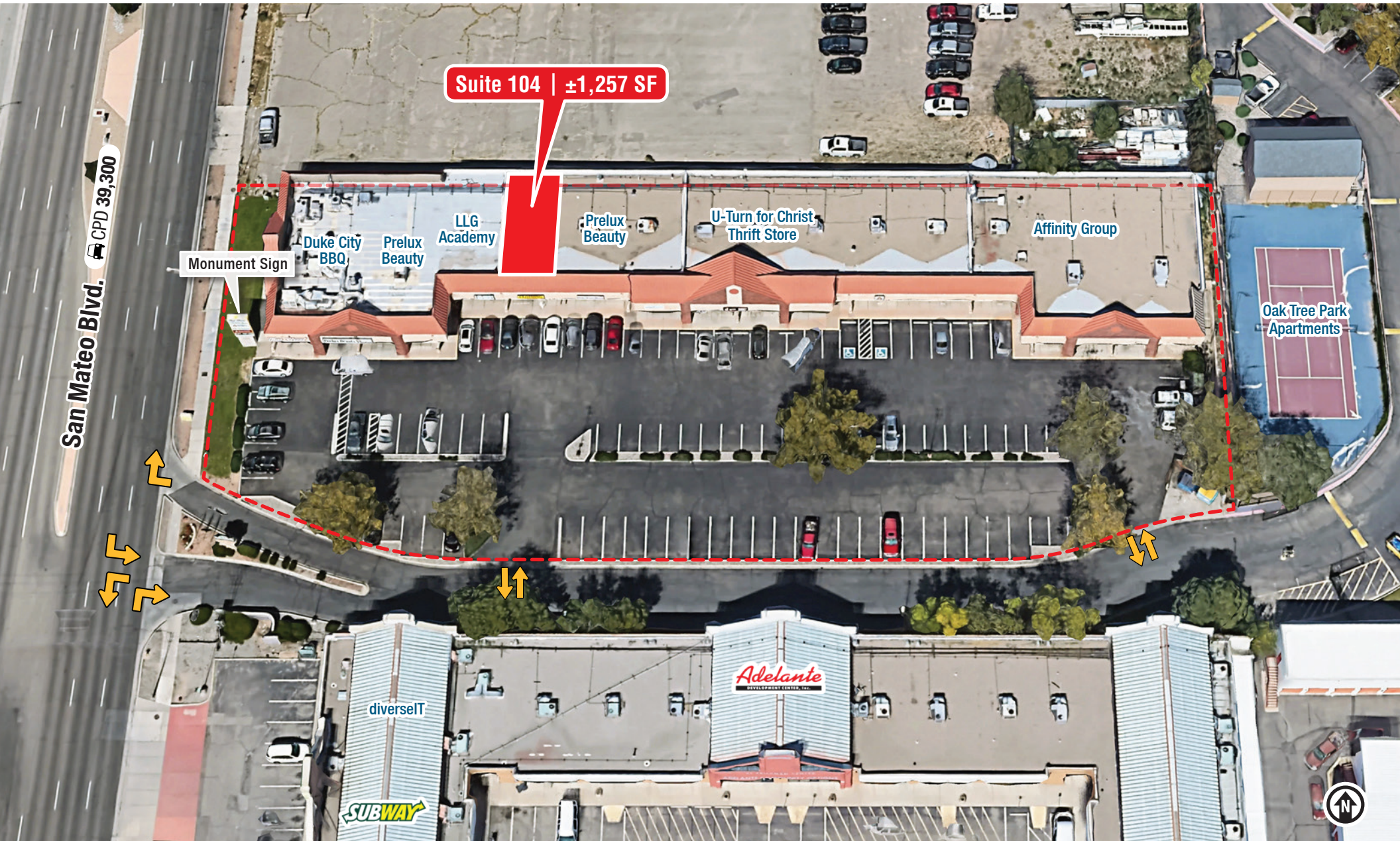
**Todd Strickland**  
todd@sunvista.com  
505 450 1121

**Rob Bridges**  
rob@sunvista.com  
505 977 5094

For Lease

# RETAIL SPACE ON HIGH-TRAFFIC CORRIDOR

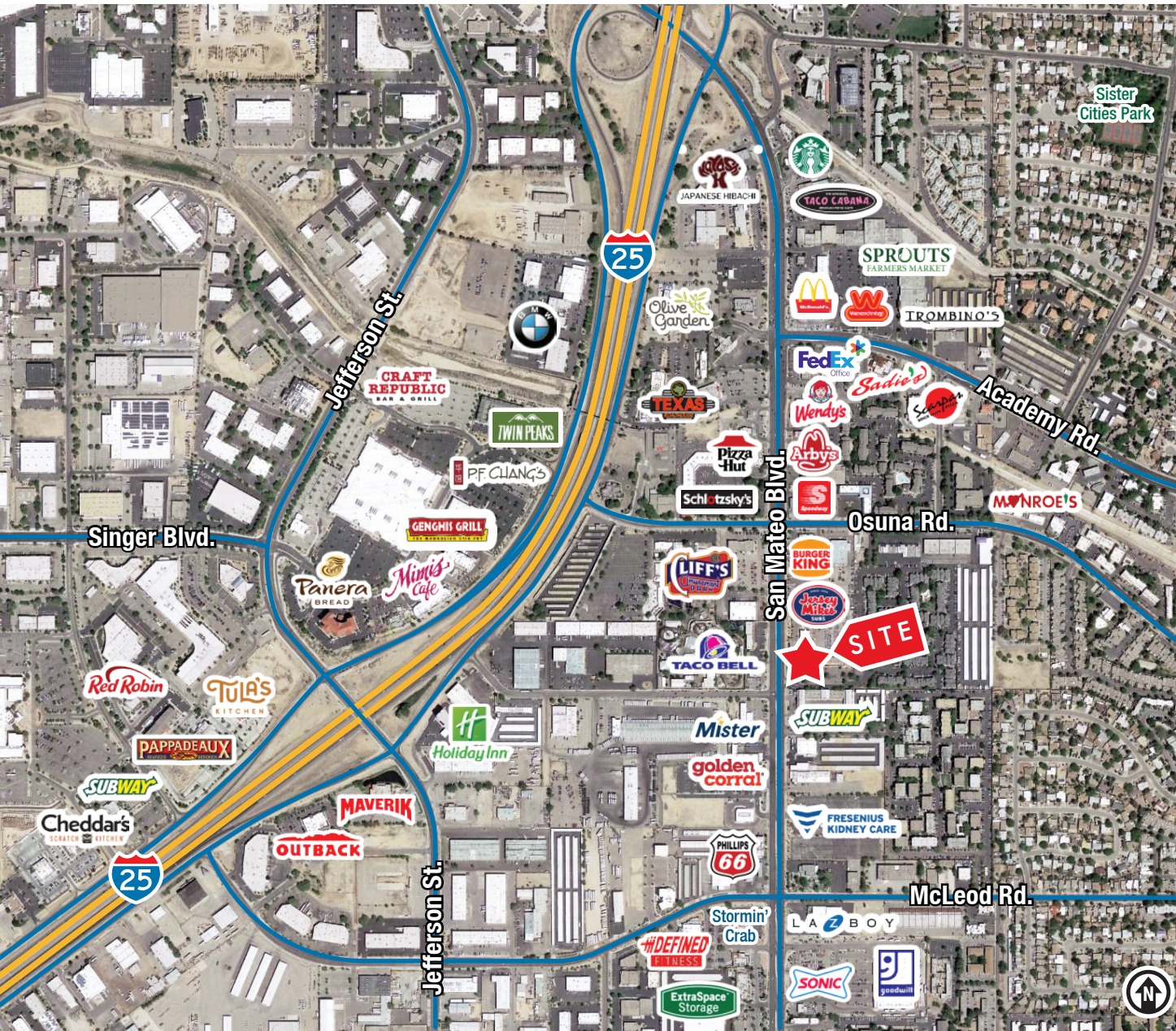
5500 San Mateo Blvd. NE | Suite 104 | Albuquerque, NM 87109



# For Lease

## RETAIL SPACE ON HIGH-TRAFFIC CORRIDOR

5500 San Mateo Blvd. NE | Suite 104 | Albuquerque, NM 87109

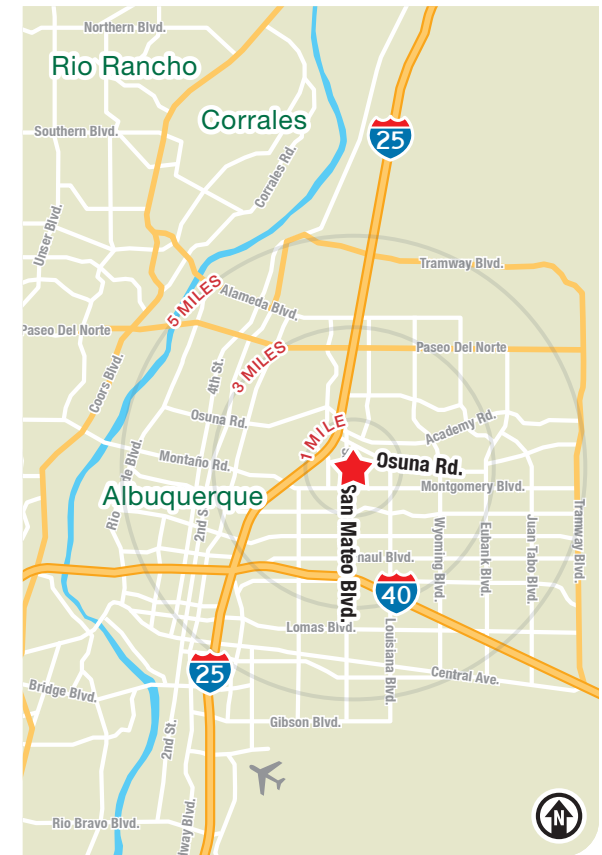


### LOCATION

| Demographics       | 1 mile   | 3 mile   | 5 mile   |
|--------------------|----------|----------|----------|
| Total Population   | 12,987   | 97,251   | 256,489  |
| Average HH Income  | \$69,325 | \$90,178 | \$96,783 |
| Daytime Employment | 20,148   | 103,842  | 193,270  |

2023 Forecasted by Esri

**HUB Zone** [MORE INFO](#)



**NAI SunVista**

505 878 0001 | [sunvista.com](http://sunvista.com)

2424 Louisiana Blvd. NE | Suite 100 | Albuquerque, NM 87110

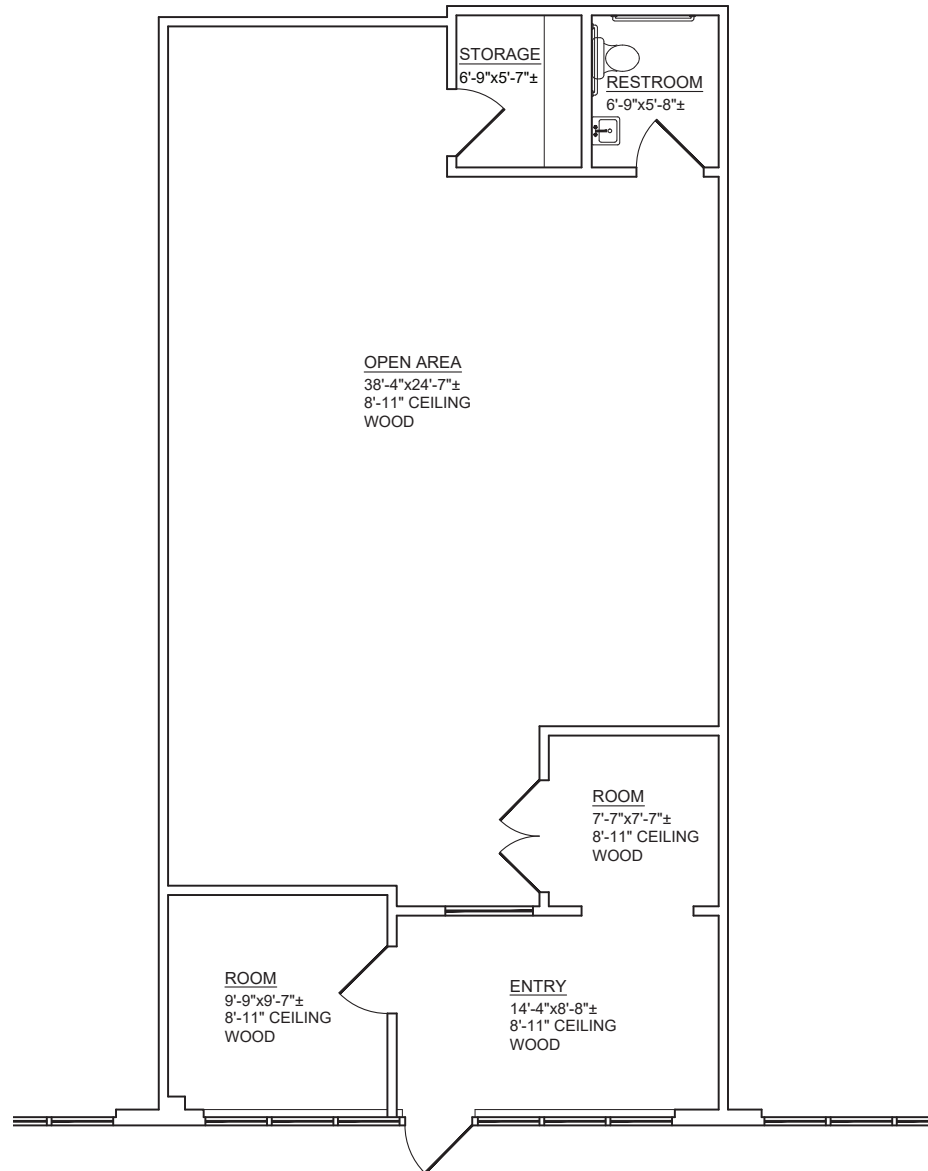
**Todd Strickland**  
todd@sunvista.com  
505 450 1121

**Rob Bridges**  
rob@sunvista.com  
505 977 5094

# For Lease

## RETAIL SPACE ON HIGH-TRAFFIC CORRIDOR

5500 San Mateo Blvd. NE | Suite 104 | Albuquerque, NM 87109



### FLOOR PLAN

Suite 104: ±1,257 SF