

For Lease

Modern Santa Fe-Style Office

ACROSS FROM CHRISTUS ST. VINCENT MEDICAL CENTER



404 Brunn School Rd. | Suite A | Santa Fe, NM 87507

SWQ St. Michaels Dr. & Botolph Rd.



LEASE RATE
\$20.00/SF
Modified Gross



AVAILABLE
Suite A: ±2,493 SF
Available 11/1/2024

- 6-7 windowed offices
- 2 ADA restrooms & Break area
- Executive office & conference room
- Viga ceilings and wet-plastered walls

- ±327 SF basement storage available for additional fee
- 10 minutes from Santa Fe Plaza
- Zoning: C-1

NAISunVista

got space™

Martha Carpenter
martha@sunvista.com
505 228 0154

Lisa Mercer
lisa@sunvista.com
505 235 8503

For Lease

MODERN SANTA FE-STYLE OFFICE SPACE

404 Brunn School Rd. | Suite A | Santa Fe, NM 87507



NAISunVista

505 878 0001 | sunvista.com | [f](#) [X](#) [in](#) [v](#)
2424 Louisiana Blvd. NE | Suite 100 | Albuquerque, NM 87110

Martha Carpenter
martha@sunvista.com
505 228 0154

Lisa Mercer
lisa@sunvista.com
505 235 8503

For Lease

MODERN SANTA FE-STYLE OFFICE SPACE

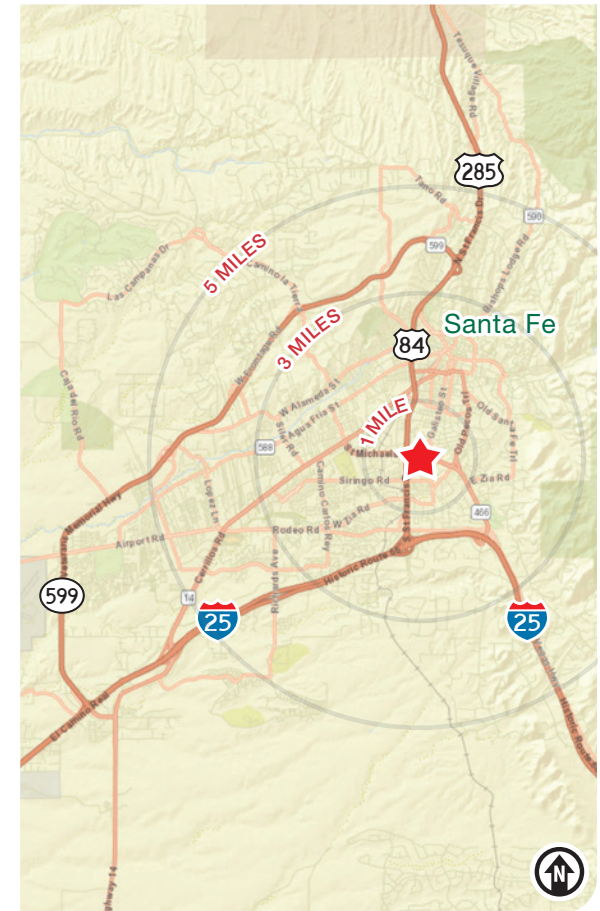
404 Brunn School Rd. | Suite A | Santa Fe, NM 87507



LOCATION

Demographics	1 mile	3 mile	5 mile
Total Population	7,440	50,534	80,254
Average HH Income	\$97,637	\$105,364	\$109,923
Daytime Employment	18,026	62,824	73,941

2023 Forecasted by Esri



505 878 0001 | sunvista.com |
2424 Louisiana Blvd. NE | Suite 100 | Albuquerque, NM 87110

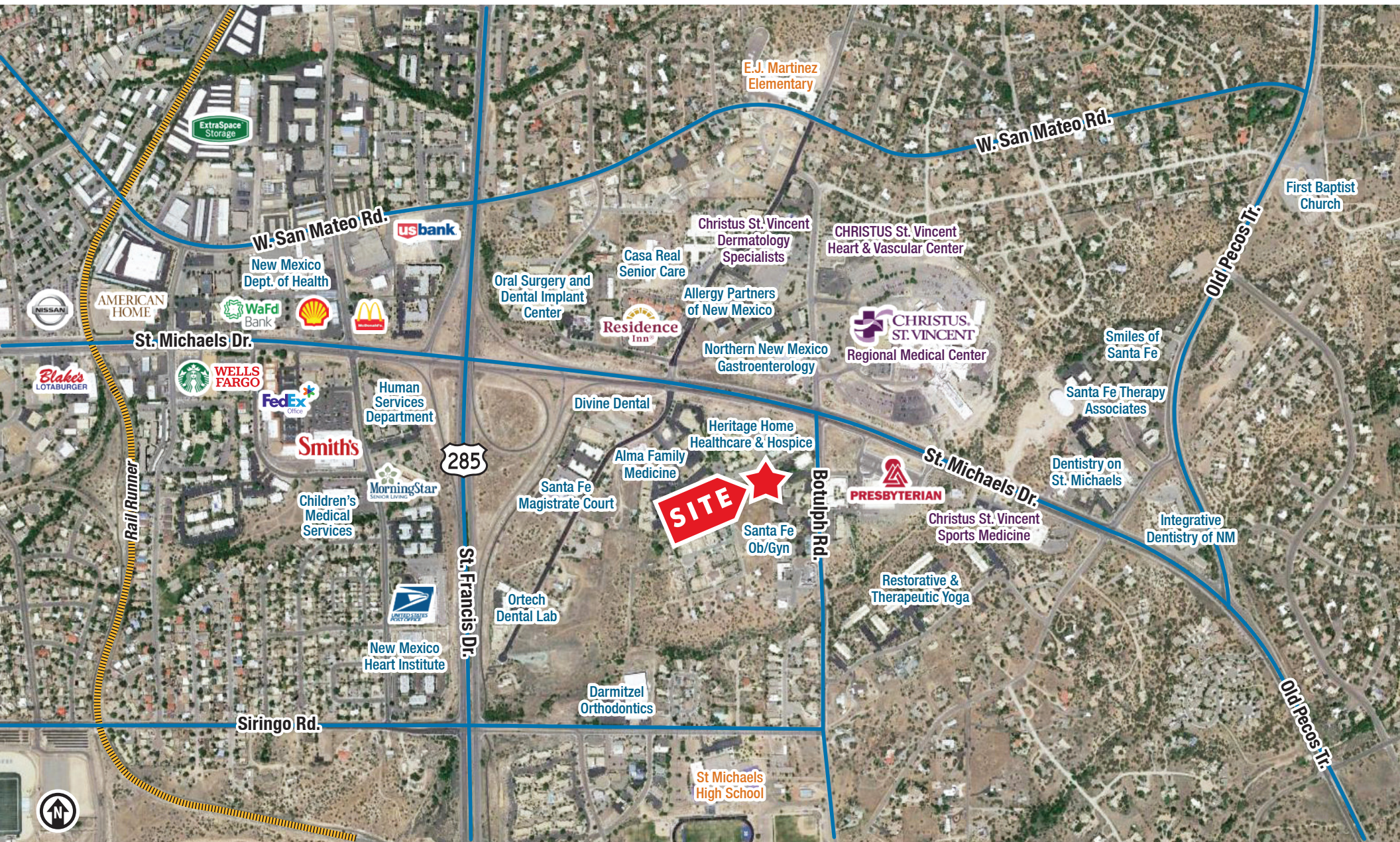
Martha Carpenter
martha@sunvista.com
505 228 0154

Lisa Mercer
lisa@sunvista.com
505 235 8503

For Lease

MODERN SANTA FE-STYLE OFFICE SPACE

404 Brunn School Rd. | Suite A | Santa Fe, NM 87507



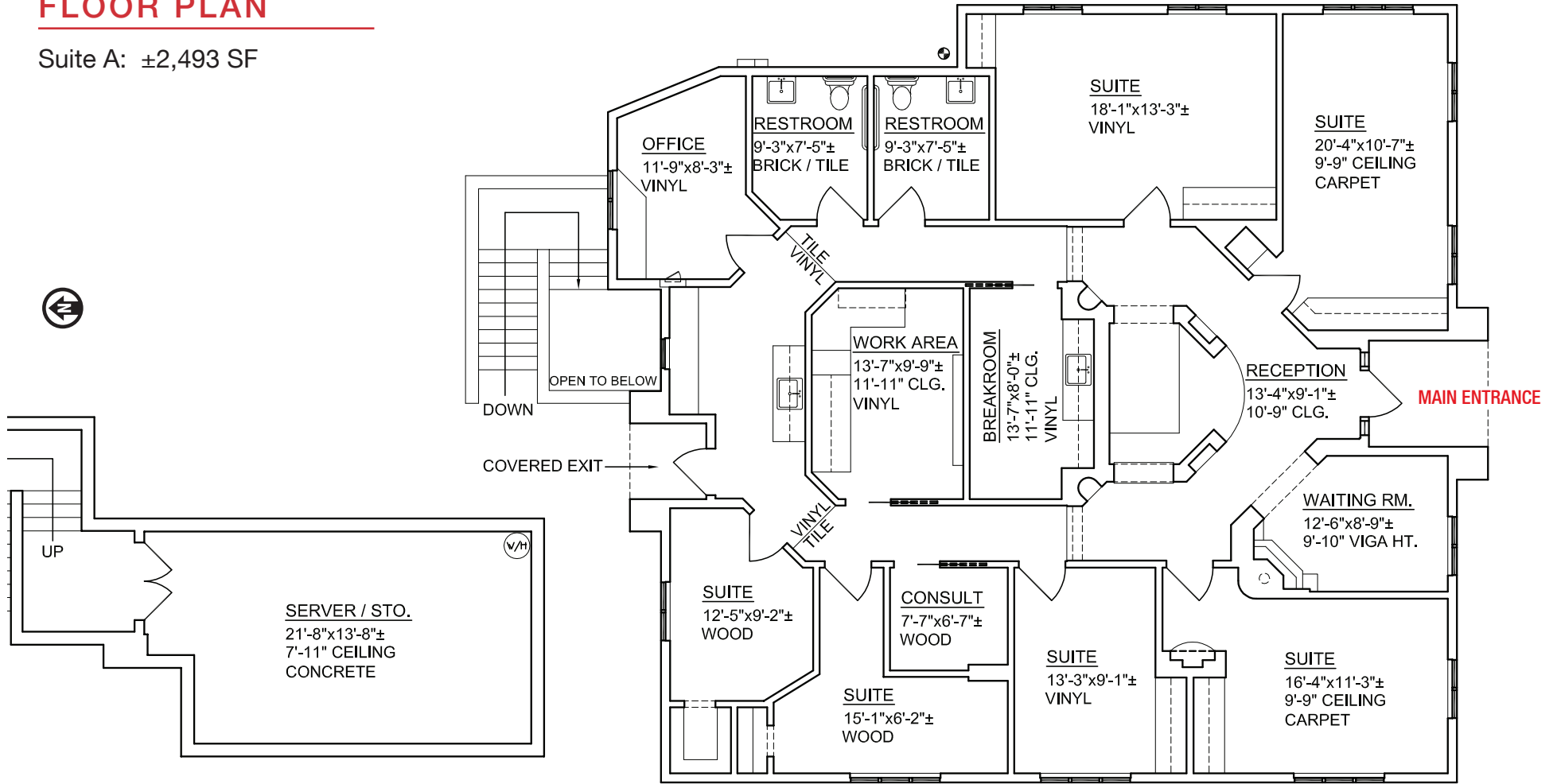
For Lease

MODERN SANTA FE-STYLE OFFICE SPACE

404 Brunn School Rd. | Suite A | Santa Fe, NM 87507

FLOOR PLAN

Suite A: ±2,493 SF



BASEMENT

±327 SF (Not Included In SF)
Available For Additional Fee