

For
Sublease

Bite-Size Sublease Opportunity

ONE EXECUTIVE CENTER IN THE NORTHEAST HEIGHTS



8500 Menaul Blvd. NE | Albuquerque, NM 87112

SEQ Menaul & Wyoming Blvds. NE



AVAILABLE

Suite B-275: ±1,383 SF



LEASE RATE

\$19.50/SF Full Service

- 4 offices, reception, data room, and storage
- Suite comes furnished
- Sublease term expires 12/31/25

NAISunVista

got space™

DJ Brigman, SIOR, CCIM
DJ@sunvista.com
505 998 1562

Danaë Fernández
danae@sunvista.com
505 604 8766

For Sublease

BITE-SIZE SUBLEASE OPPORTUNITY

8500 Menaul Blvd. NE | Albuquerque, NM 87112



SITE

AVAILABLE

Suite B-275: ±1,383 SF

HIGHLIGHTS

- 4 offices, reception area, data room, and storage
- Suite comes furnished
- Shared building conference room
- Fiber within the building
- Fully-fenced parking
- On-site security
- Newly-remodeled building lobby
- Sublease term expires 12/31/25

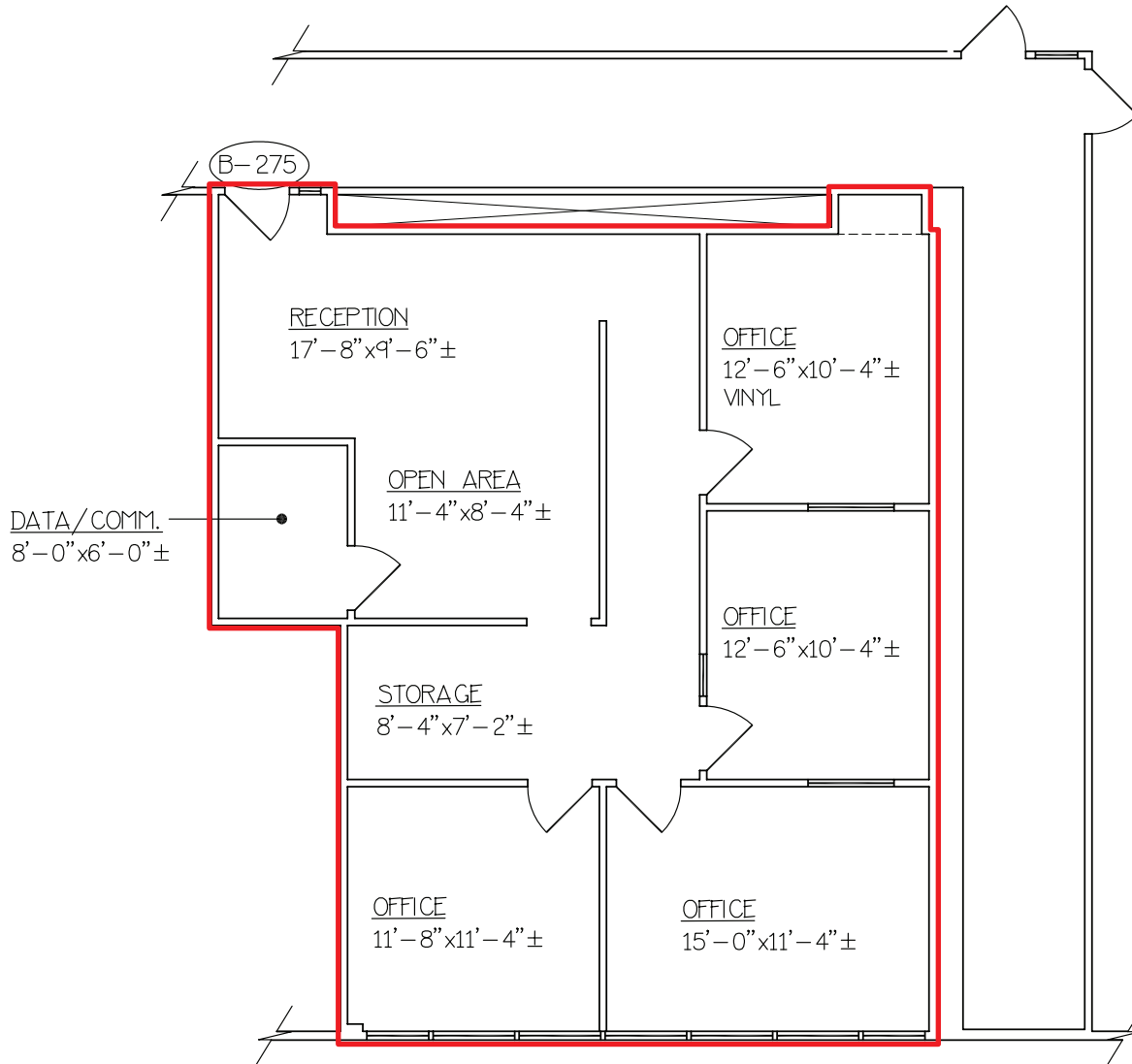
IDO ZONING

- [MX-M](#) 

For Sublease

BITE-SIZE SUBLEASE OPPORTUNITY

8500 Menaul Blvd. NE | Albuquerque, NM 87112



FLOOR PLAN

Suite B-275: ±1,383 SF

For Sublease

BITE-SIZE SUBLEASE OPPORTUNITY

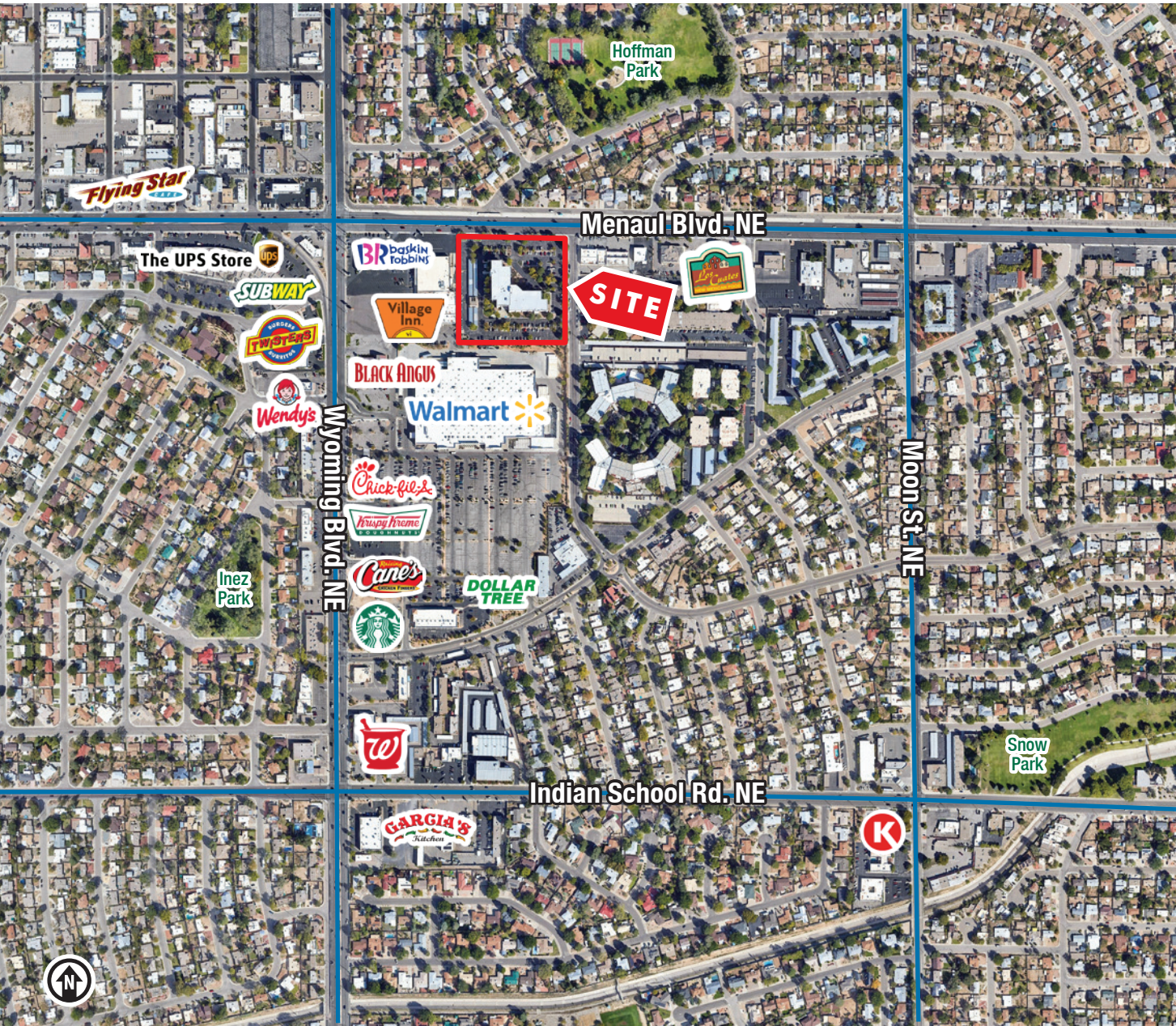
8500 Menaul Blvd. NE | Albuquerque, NM 87112



For Sublease

BITE-SIZE SUBLEASE OPPORTUNITY

8500 Menaul Blvd. NE | Albuquerque, NM 87112



LOCATION

Demographics	1 mile	3 mile	5 mile
Total Population	16,514	147,414	296,083
Average HH Income	\$77,719	\$82,438	\$92,984
Daytime Employment	7,853	74,346	189,239

2024 Forecasted by Esri

