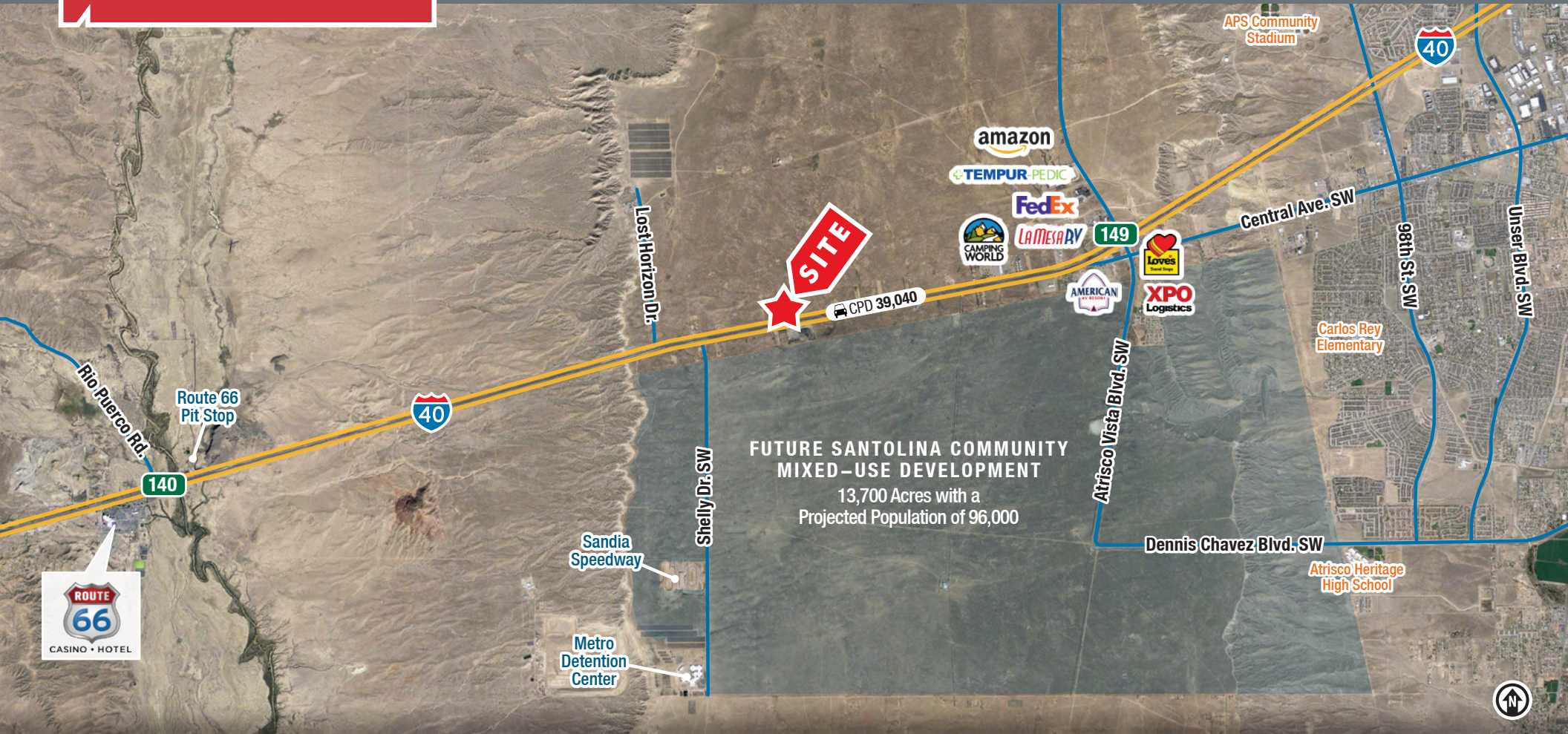


For Sale

Freeway Frontage on I-40

LOCATED ON N. I-40 FRONTAGE RD. WEST OF ALBUQUERQUE



**FUTURE SANTOLINA COMMUNITY
MIXED-USE DEVELOPMENT**
13,700 Acres with a
Projected Population of 96,000

NEQ I-40 & Lost Horizon Dr. NW | Albuquerque, NM 87121



AVAILABLE
Land: ±3.0 Acres



SALE PRICE
\$392,040

- Value-priced vacant land site
- In the path of growth
- Electricity nearby
- Great location for storage and recreation uses
- A-1, Bernalillo County zoning

NA SunVista

got space™

Genieve Posen
genieve@sunvista.com
505 998 1568

Alex Pulliam
alex@sunvista.com
505 350 5729

Jim Wible, CCIM
jimw@sunvista.com
505 400 6857

Keith Meyer, CCIM, SIOR
keithmeyer@sunvista.com
505 715 3228

For Sale

FREEWAY FRONTAGE ON I-40

NEQ I-40 & Lost Horizon Dr. NW | Albuquerque, NM 87121

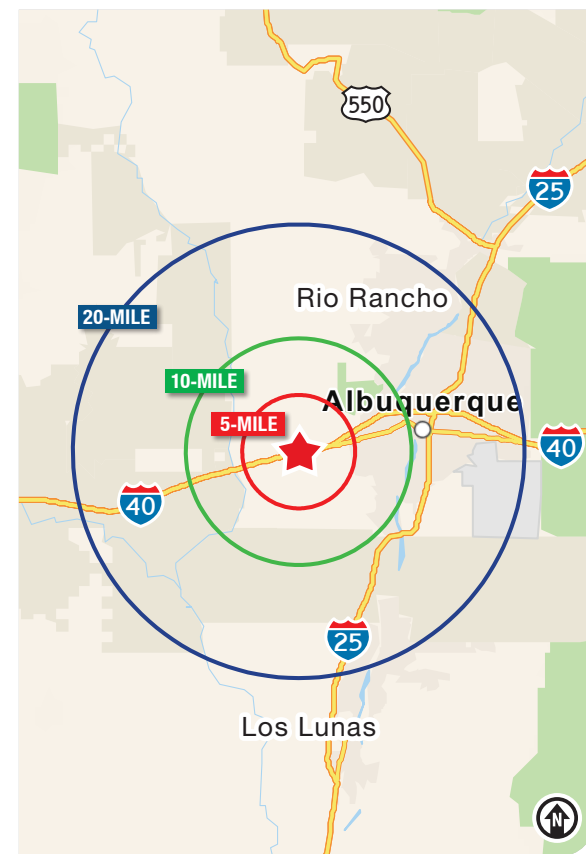


LOCATION

Demographics	5 mile	10 mile	20 mile
Total Population	5,168	171,096	756,915
Average HH Income	\$68,474	\$81,123	\$92,735
Daytime Employment	743	27,128	346,224

2024 Forecasted by Esri

Opportunity Zone [MORE INFO](#)



NAI SunVista

505 878 0001 | sunvista.com
 2424 Louisiana Blvd. NE | Suite 100
 Albuquerque, NM 87110

Genieve Posen
genieve@sunvista.com
 505 998 1568

Alex Pulliam
alex@sunvista.com
 505 350 5729

Jim Wible, CCIM
jimw@sunvista.com
 505 400 6857

Keith Meyer, CCIM, SIOR
keithmeyer@sunvista.com
 505 715 3228

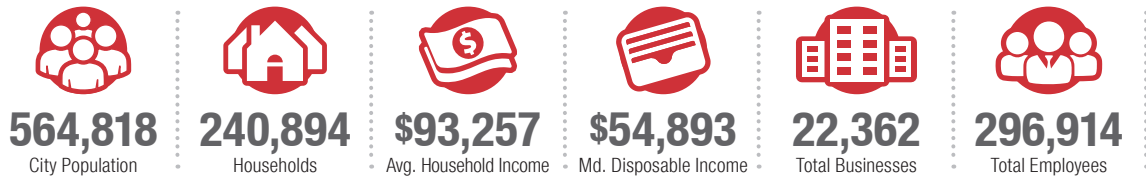
Albuquerque

TRADE AREA ANALYSIS

ALBUQUERQUE | NEW MEXICO

Located near the geographic center of New Mexico at the intersection of I-25 and I-40 and resting at the foot of the Sandia Mountains, Albuquerque is the state's most populous city and one of the most livable in the U.S. The city serves as a major transportation and shipping hub for the Southwest, with BNSF Railway, air cargo from Albuquerque International Airport (Sunport), and a commuter train running from Belen to Santa Fe. Albuquerque is home to the International Balloon Fiesta, the world's largest gathering of hot-air balloons. A talented workforce, a business-friendly environment, a community rooted in history and a high quality of life make Albuquerque hard to beat.

ALBUQUERQUE BY THE NUMBERS (ESRI 2024 Demographics)



In the News

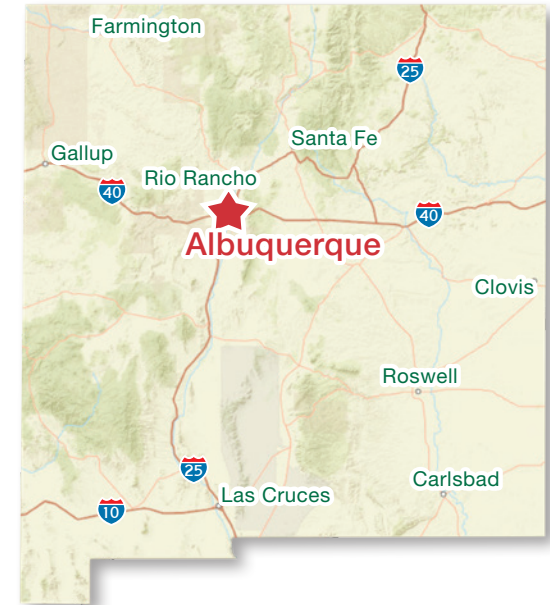
Ranked 6th in America's favorite cities list - *Travel + Leisure*
Ranks among America's best cities for global trade - *Global Trade Magazine*
The 5th most cost-friendly city to do business in the U.S. - *KPMG*



926,835
Albuquerque
Metro
Population



**The
Largest**
City in the State



TOP 8 REASONS TO CHOOSE ALBUQUERQUE

- Low-risk location
- Skilled workforce
- Business incentives
- The metro area communities
- Quality of life
- Cost of living
- Innovation central
- On the cutting edge of technology



HEALTHCARE

Albuquerque is the center of health care excellence in New Mexico. UNM is a nationally-recognized Class 1 research institution. There are more than 2,000 hospital beds in the metro area.



EDUCATION | SKILLED WORKFORCE

Albuquerque is top in nation for cities with the most college graduates – more than 70,000 college students reside in metro area. The area also has one of the largest number of PhD's per capita in the nation.



COMPETITIVE BUSINESS CLIMATE

Low energy costs, low property taxes, affordable real estate, low cost of living, a qualified/productive workforce, aggressive incentives and efficient market access make Albuquerque an attractive choice.